



# Weatherford®

## REAL RESULTS

### Kuwait: Weatherford Surface Logging Detects Pipe Washout, Avoids Possible Twist-Off

#### Objectives

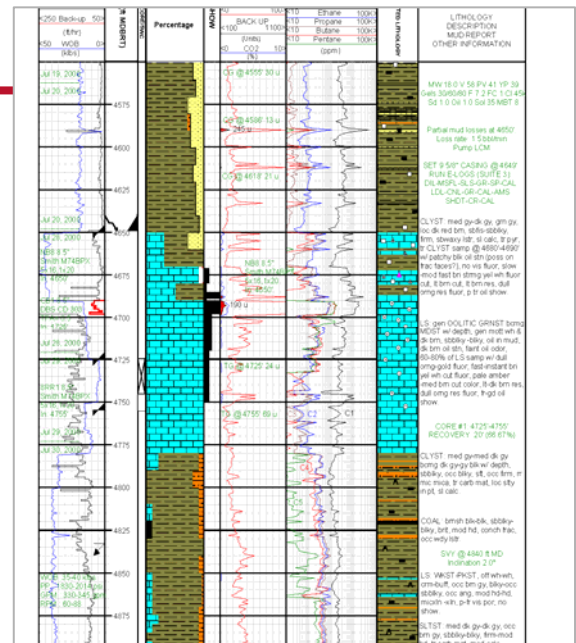
- Monitor well and formation conditions during drilling of an exploration well in Kuwait.

#### Results

- Weatherford's surface logging crew observed an 80-psi (552-kPa) drop in standpipe pressure during drilling operations and informed the foreman and the driller to check the mud pumps.
- A washout was confirmed, and the string was pulled out of the hole.

#### Value to Client

- The fast response of the Weatherford crew helped avoid a possible twist-off, potentially saving the operator five days of rig time and an associated cost of US\$0.5 million.



Backed by a global team of more than 1,500 specialists and incorporating a suite of highly innovative tools, Weatherford's surface logging capabilities help operators make timely and informed decisions that reduce reservoir uncertainty and optimize drilling operations.

**Location**  
Kuwait

**Well Type**  
Exploration

**Products/Services**  
Surface logging services

Weatherford  
Mohamed Bekhit  
mohamed.bekhit@me.weatherford.com