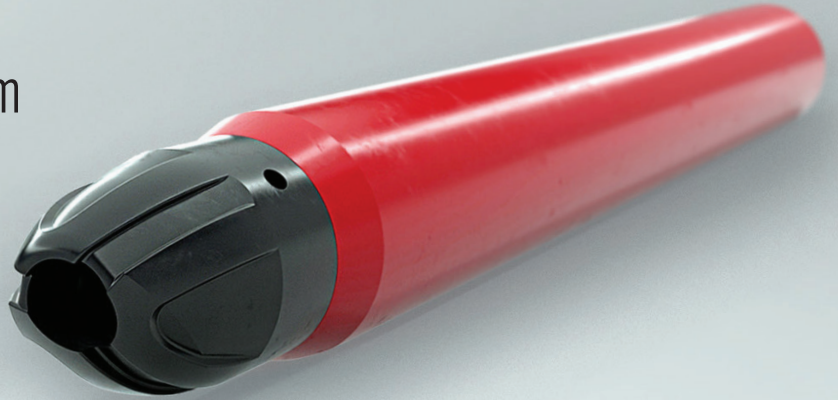




SecureTrac™

Compact Casing Shoe System



Maximize Efficiency In Unconventional Completions

The economics of unconventional wells demand a high degree of operational efficiency. The conventional option for stimulation remains pump-down operations which remove the need for a coiled-tubing unit or wireline tractor at the beginning of the fracturing operation as well as the extra costs and risks associated with those technologies.

For pump-down operations to be effective, communication with the formation is essential. You have multiple options available for creating a flow path at the toe of the well to enable the pump-down operations.

The Weatherford SecureTrac compact casing shoe system maximizes reservoir exposure while maintaining well integrity. Compared with other techniques for establishing communication with the formation, this innovative system minimizes the risk of mechanical failure and continues to function as a well barrier until the well is perforated.



WELL INTEGRITY

Designed with well integrity at the forefront to provide a gas-tight barrier even at low differential pressures



OPERATIONAL EFFICIENCY

The integral design shortens the length of the casing shoe as compared to conventional shoe tracks, increasing overall well efficiency and productivity.



OPTIMAL DESIGN

Extensive computational fluid dynamics simulations optimize laminar flow and decrease fluid velocities to reduce erosion and minimized back pressure



Rated to 15,000 psi (103 MPa) and 400°F (204°C), the SecureTrac system overcomes the challenges associated with unconventional wells, ensuring well integrity even when exposed to pressure from nearby wells undergoing stimulation work.

The integral design shortens the length of the casing shoe as compared to conventional shoe tracks, maximizing the length of the productive hole and increasing overall well efficiency and productivity.

Coupled with the proven Sure-Seal 3® valves and the internal steel components, the SecureTrac compact casing shoe system's optimal design exceeds the requirements of API 10F and retains full functionality and sealing ability even after circulation at rates of 10 barrels per minute for up to 62 hours and more than 1,100,000 lb equivalent sand content.

Maximize Efficiency In Your Unconventional Completions

Learn how the SecureTrac compact casing shoe system optimizes unconventional completions without risking well integrity.

VISIT THE WEBSITE