



Weatherford®

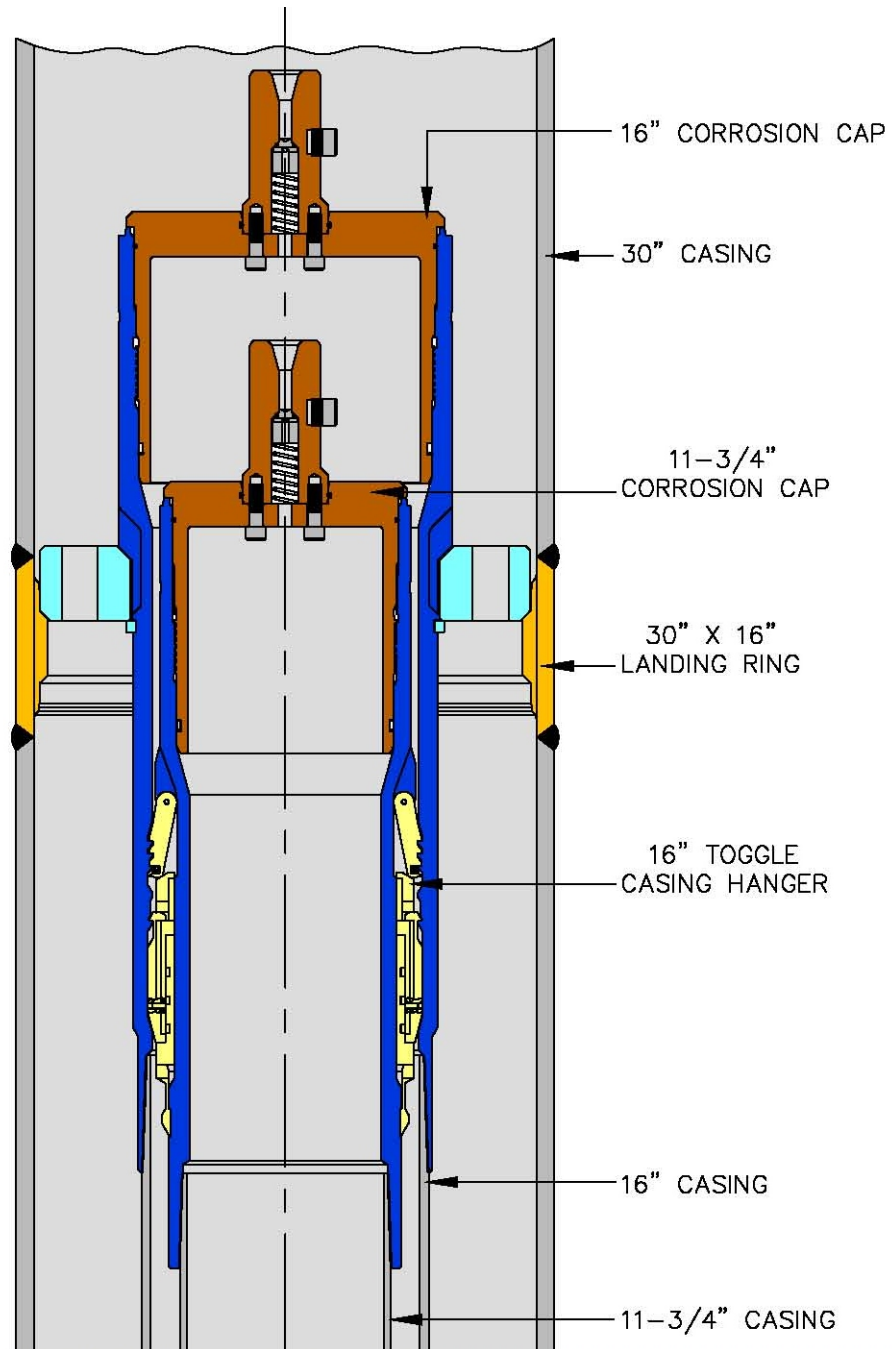
Wellhead Systems



Caisson Metal Seal (CMS)
Mudline Suspension System
Components Catalog



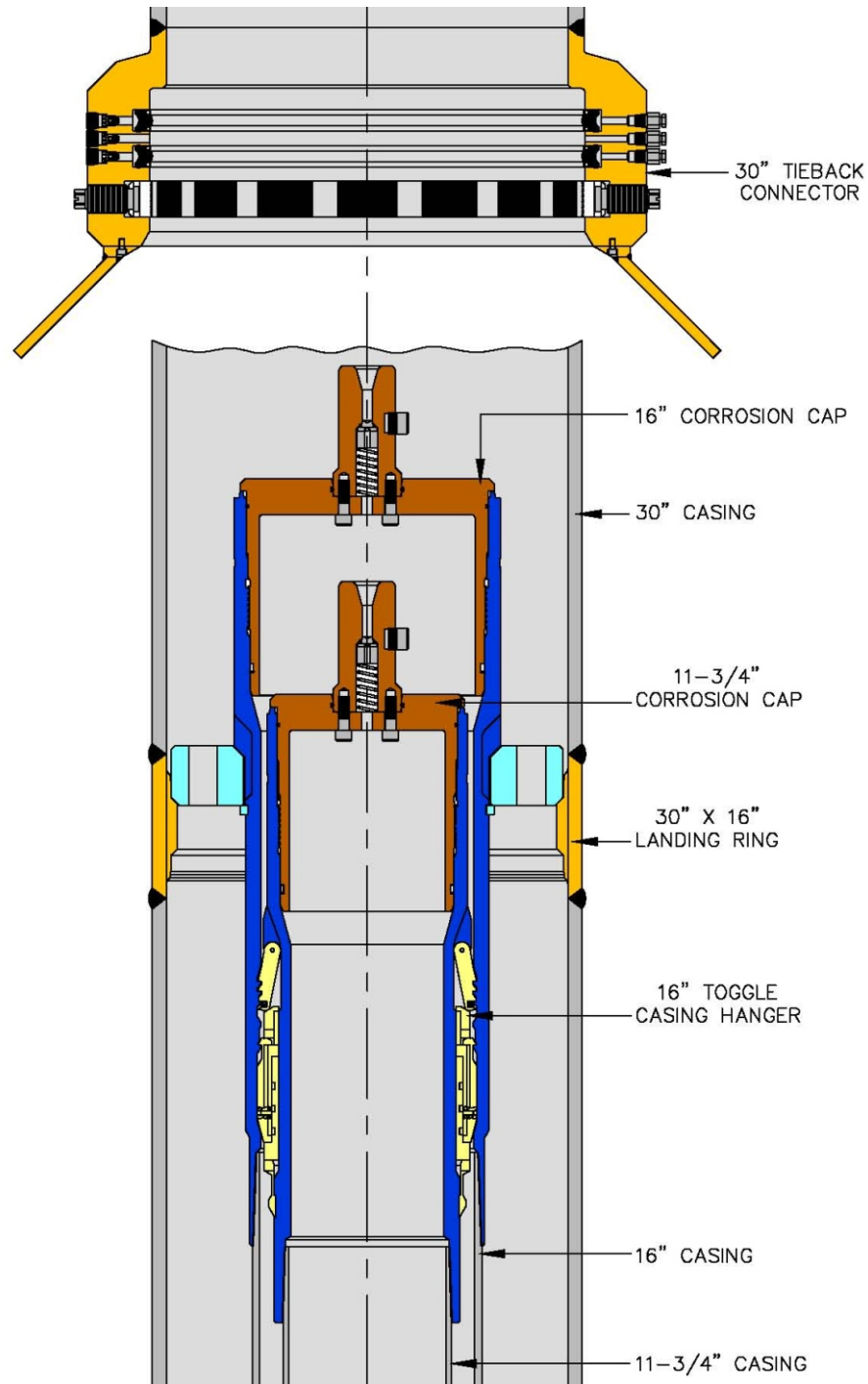
Mudline Suspension System



**CMS Mudline System, 30 x 16 x 11-3/4
Complete with Corrosion Caps**



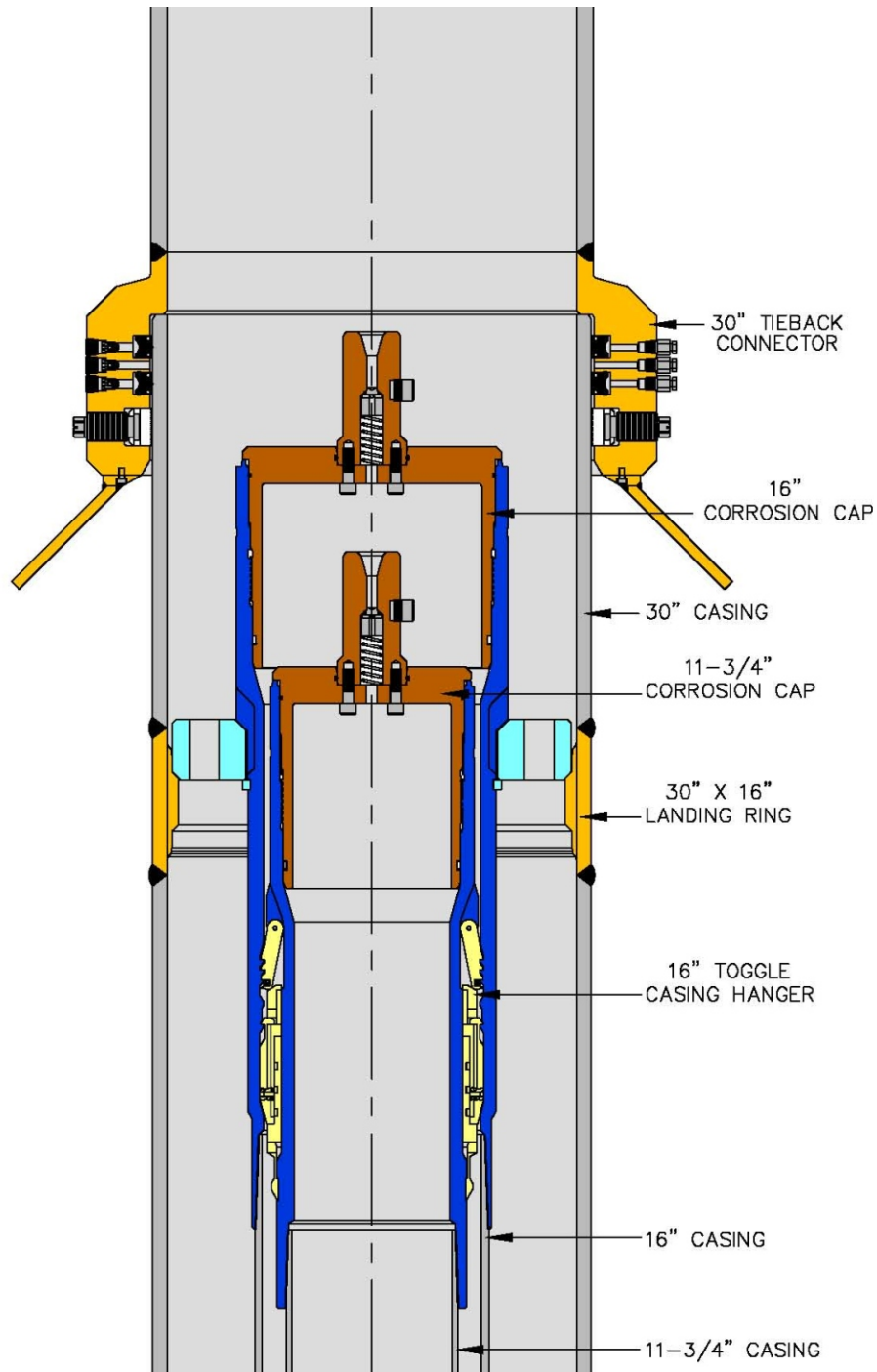
Mudline Suspension System



**CMS Mudline System, 30 x 16 x 11-3/4
Running 30-in. Tieback Connector**



Mudline Suspension System

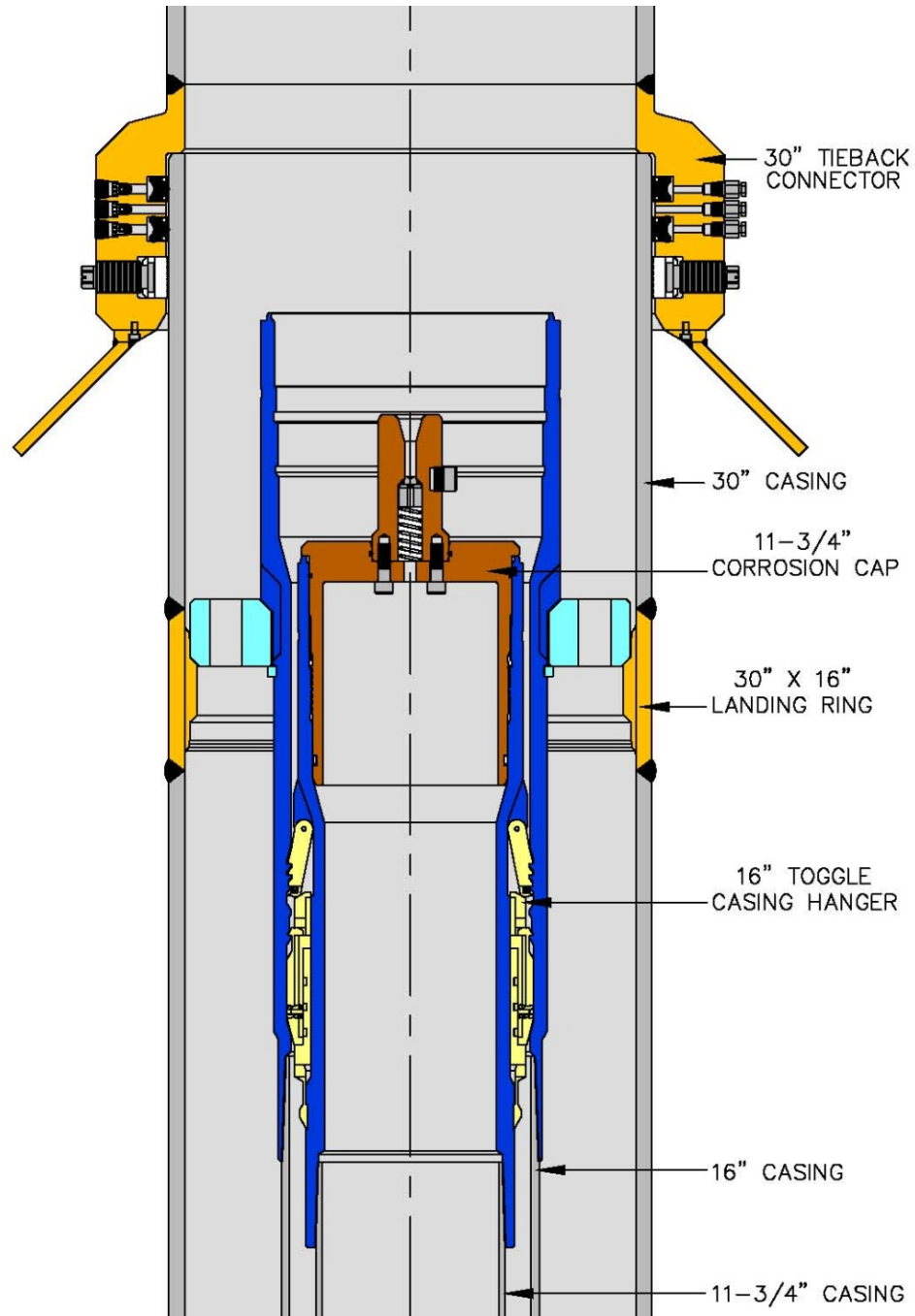


**CMS Mudline System, 30 x 16 x 11-3/4
30-in. Tieback Connector Installed**





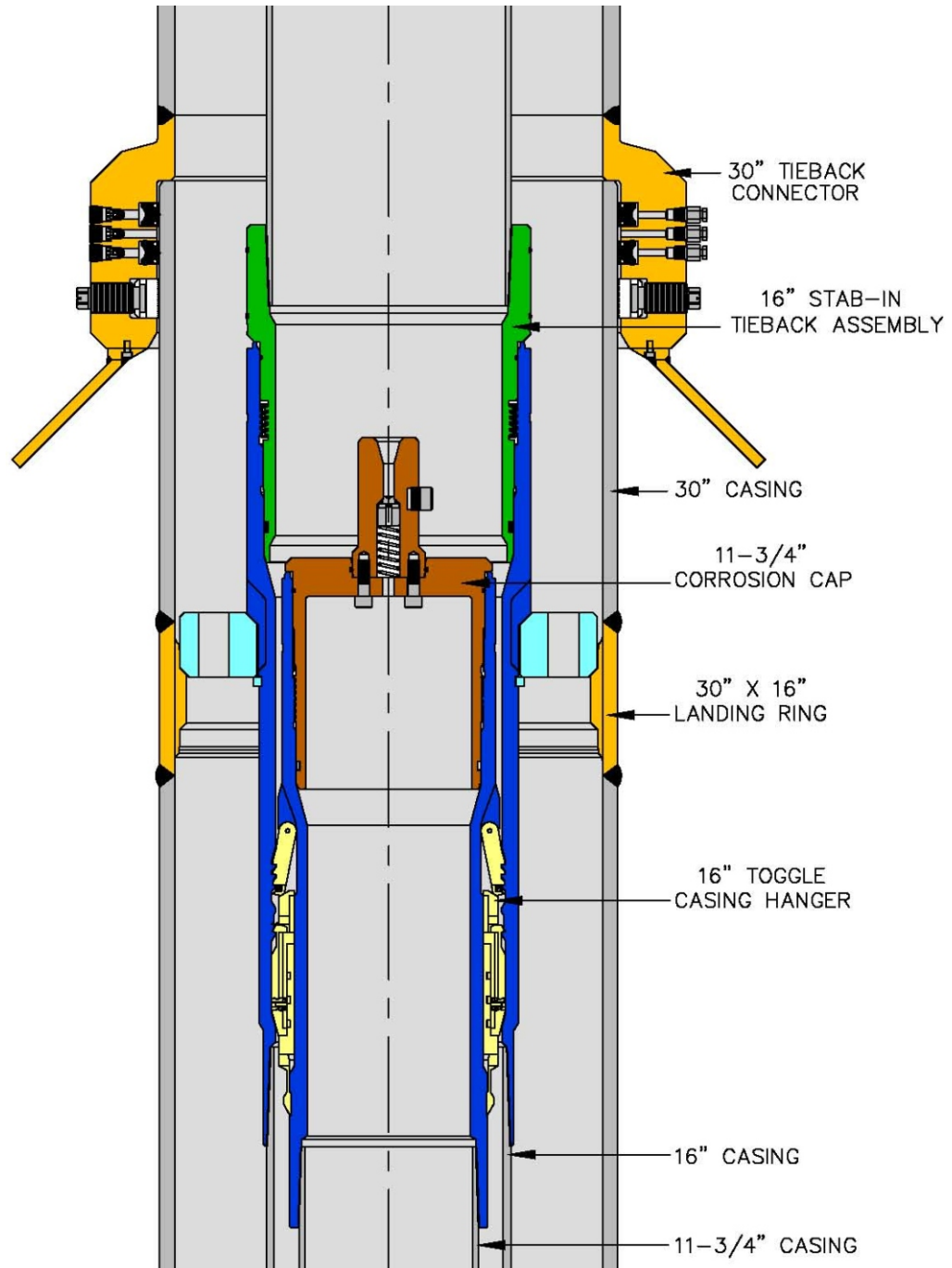
Mudline Suspension System



**CMS Mudline System, 30 x 16 x 11-3/4
16-in. Corrosion Cap Removed**



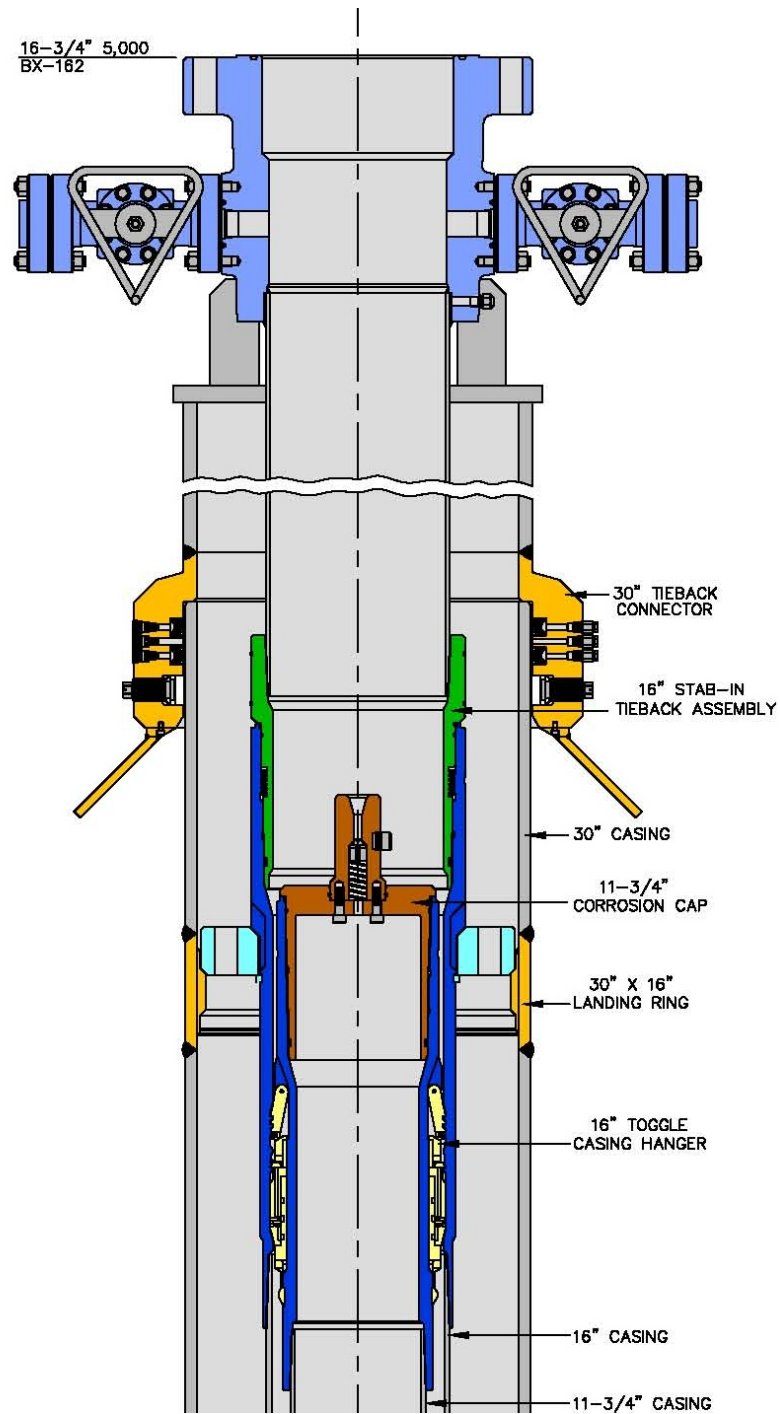
Mudline Suspension System



**CMS Mudline System, 30 x 16 x 11-3/4
16-in. Stab-in Tieback Installed**



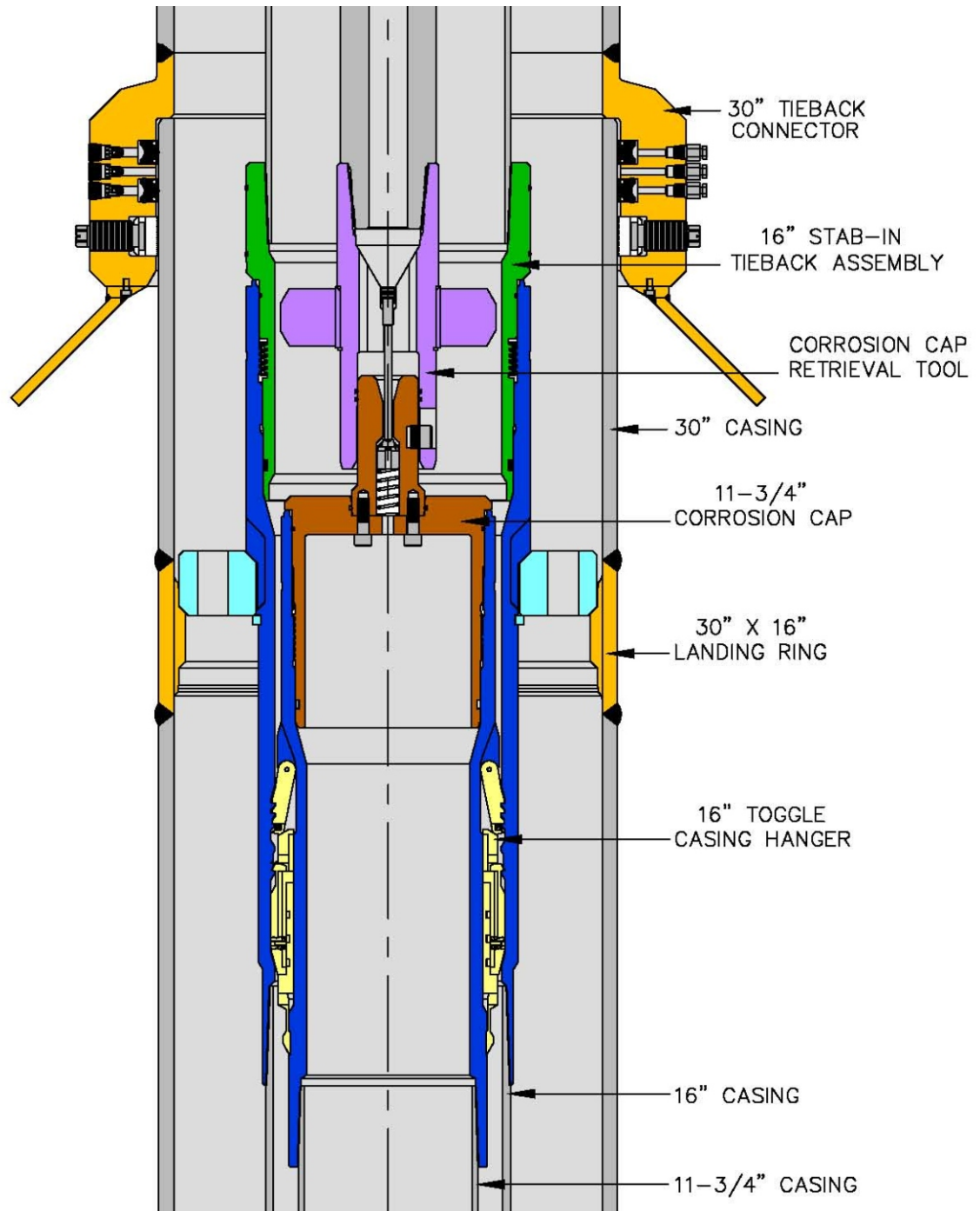
Mudline Suspension System



**CMS Mudline System, 30 x 16 x 11-3/4
16-3/4-in. 5,000 PSI Casing Flange
Installed on 16-in. Casing**



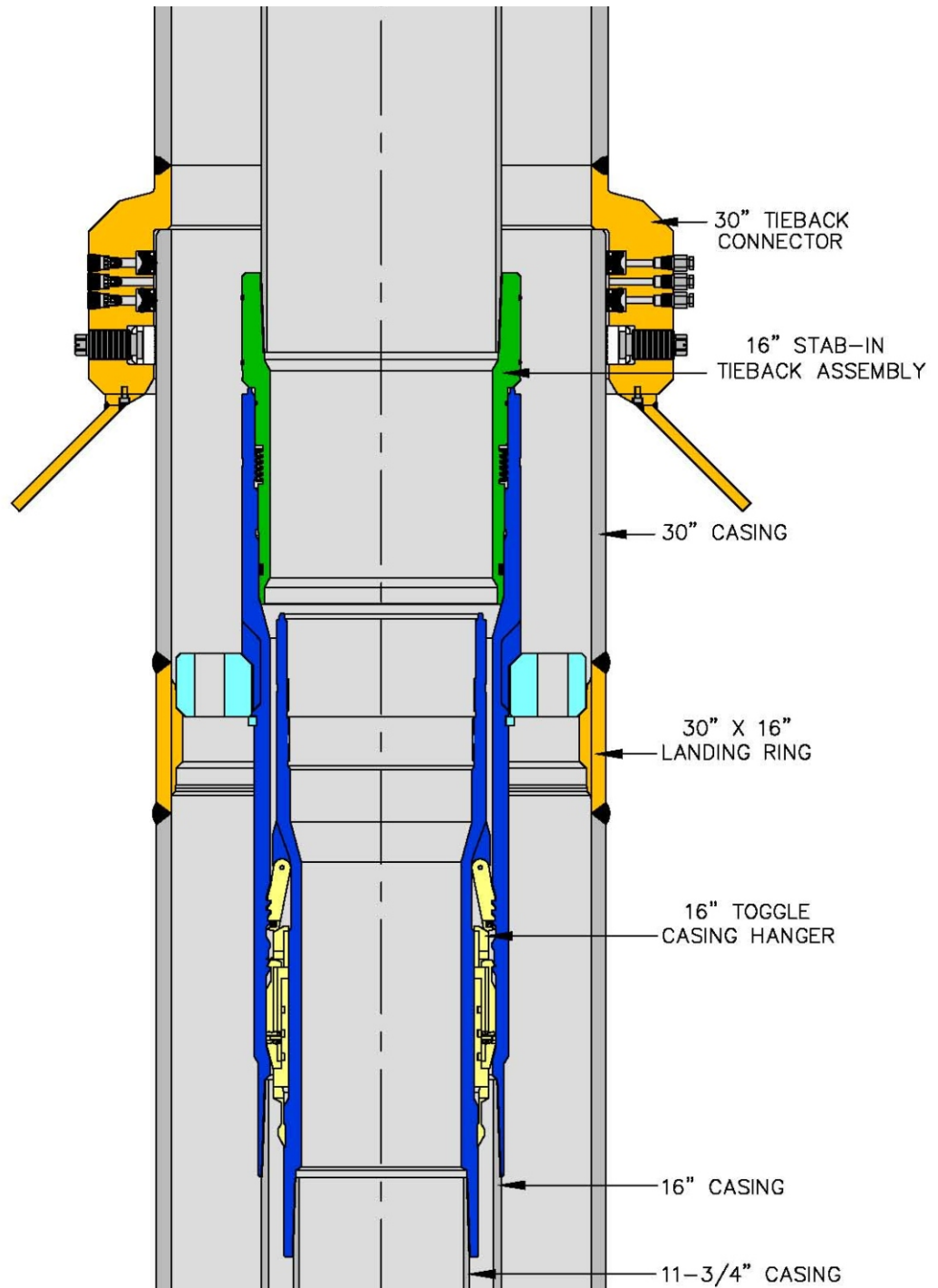
Mudline Suspension System



CMS Mudline System, 30 x 16 x 11-3/4
Retrieving 11-3/4-in. Corrosion Cap



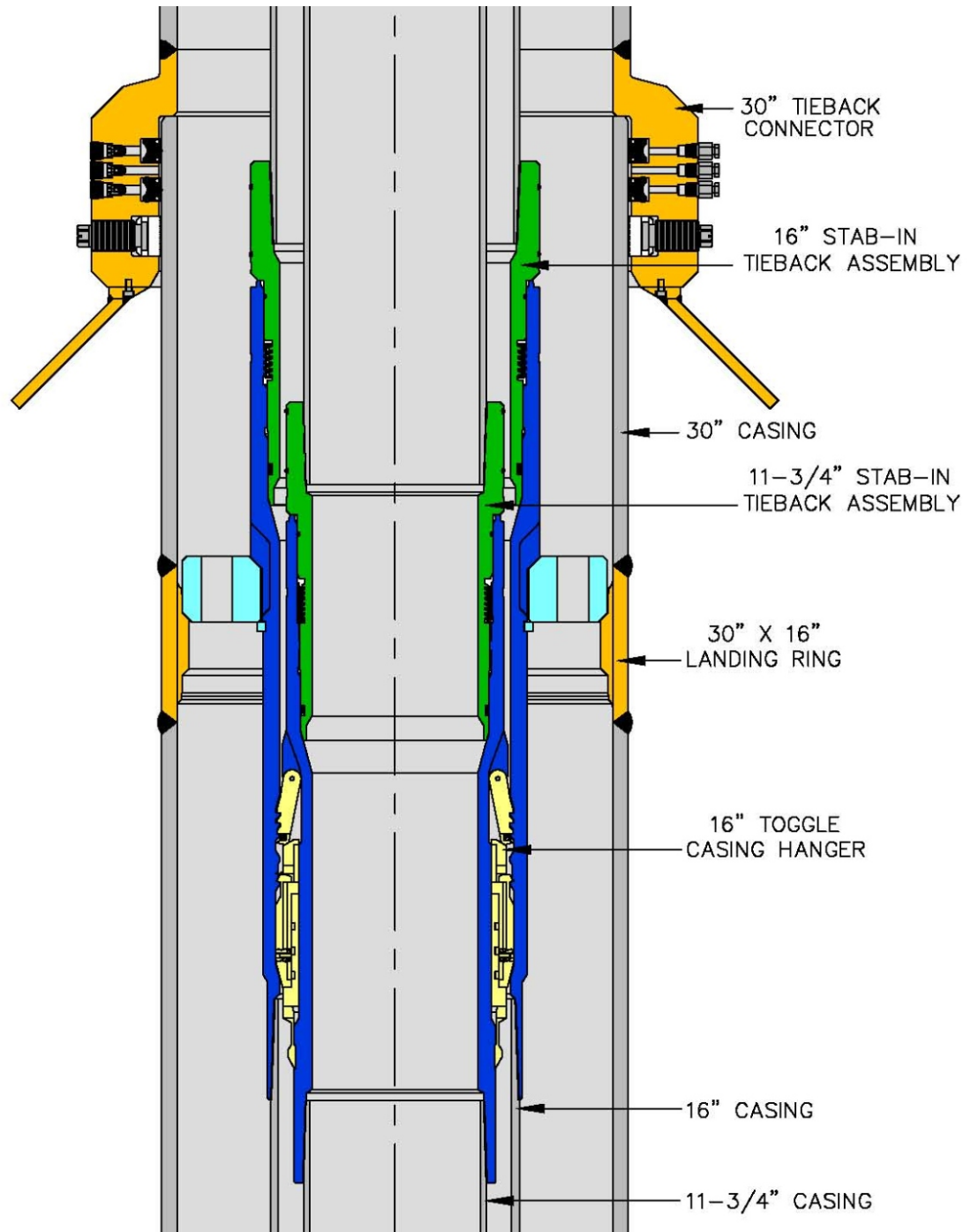
Mudline Suspension System



**CMS Mudline System, 30 x 16 x 11-3/4
11-3/4-in. Corrosion Cap Removed**



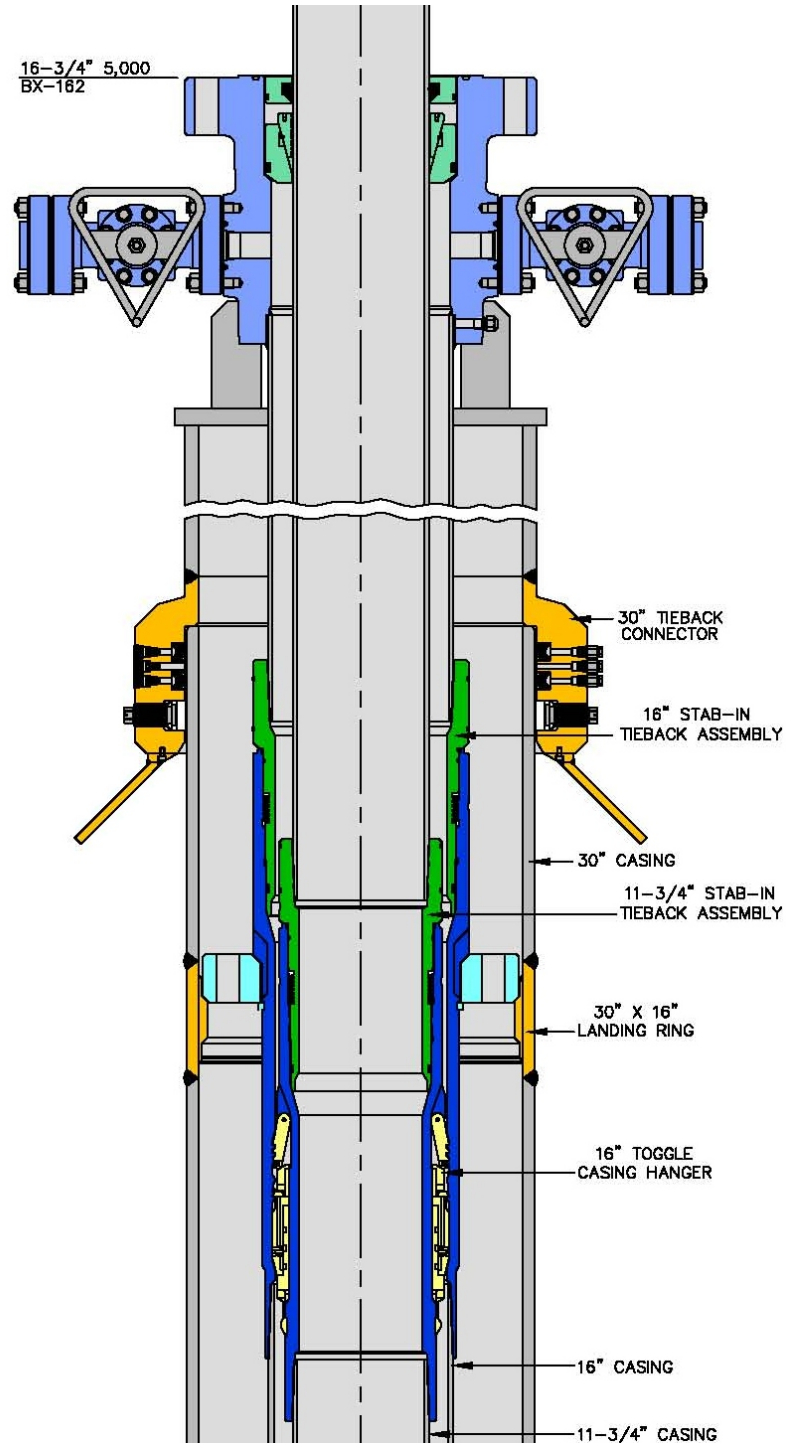
Mudline Suspension System



**CMS Mudline System, 30 x 16 x 11-3/4
11-3/4-in. Stab-in Tieback Installed**



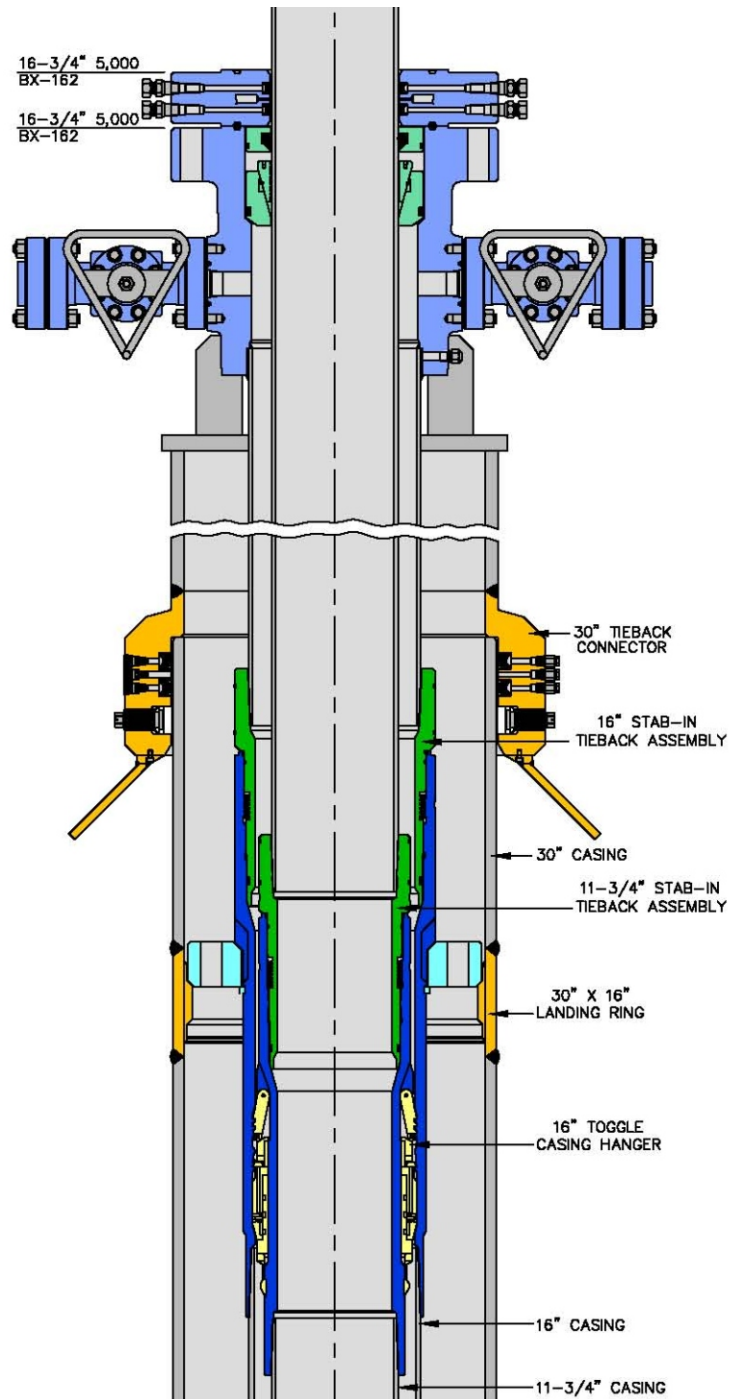
Mudline Suspension System



**CMS Mudline System, 30 x 16 x 11-3/4
11-3/4-in. Tieback Installed
16-3/4-in. 5,000 PSI Casing Hanger**



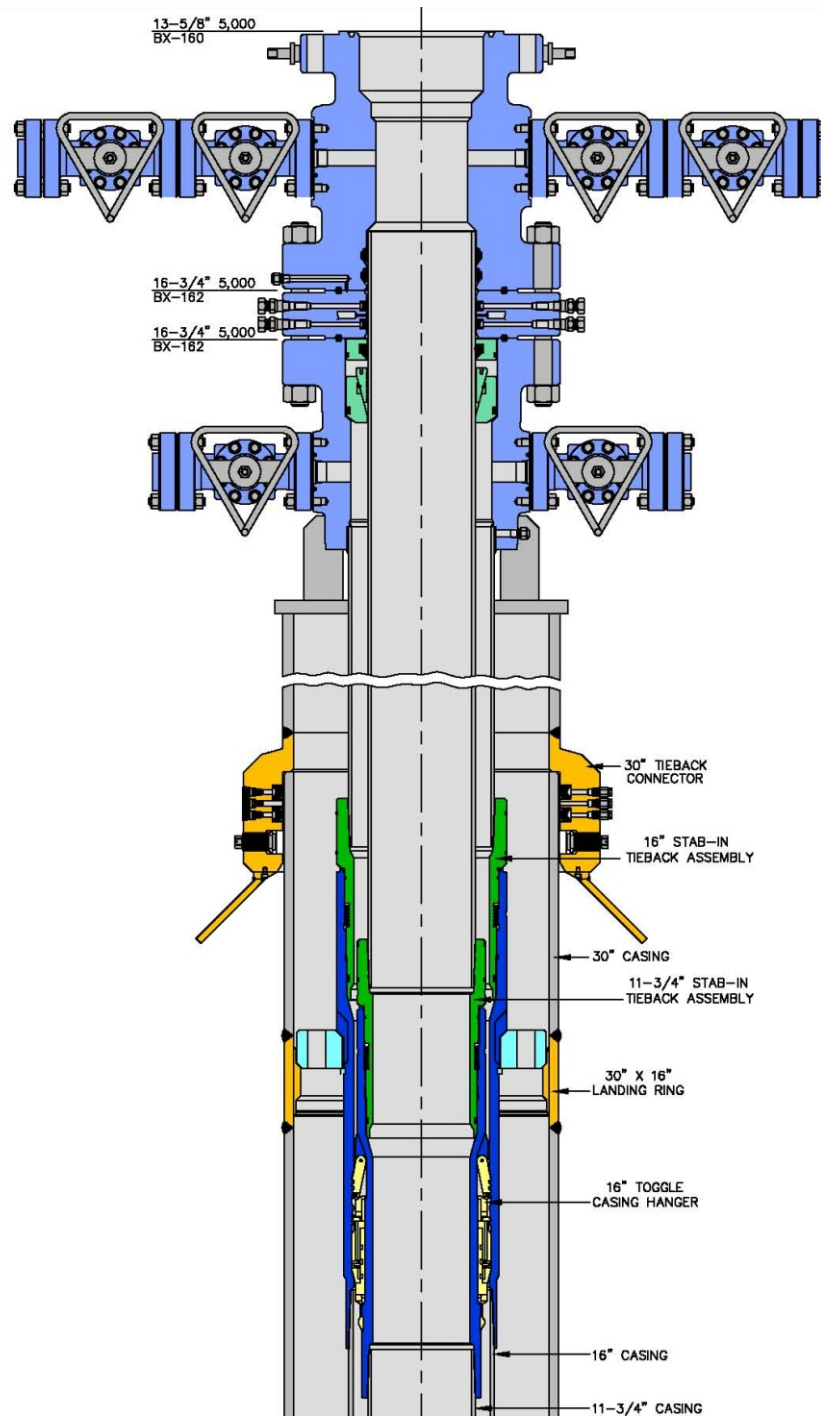
Mudline Suspension System



**CMS Mudline System, 30 x 16 x 11-3/4
16-3/4 x 16-3/4 5,000 PSI Double
Studded Pack-off Flange Installed**



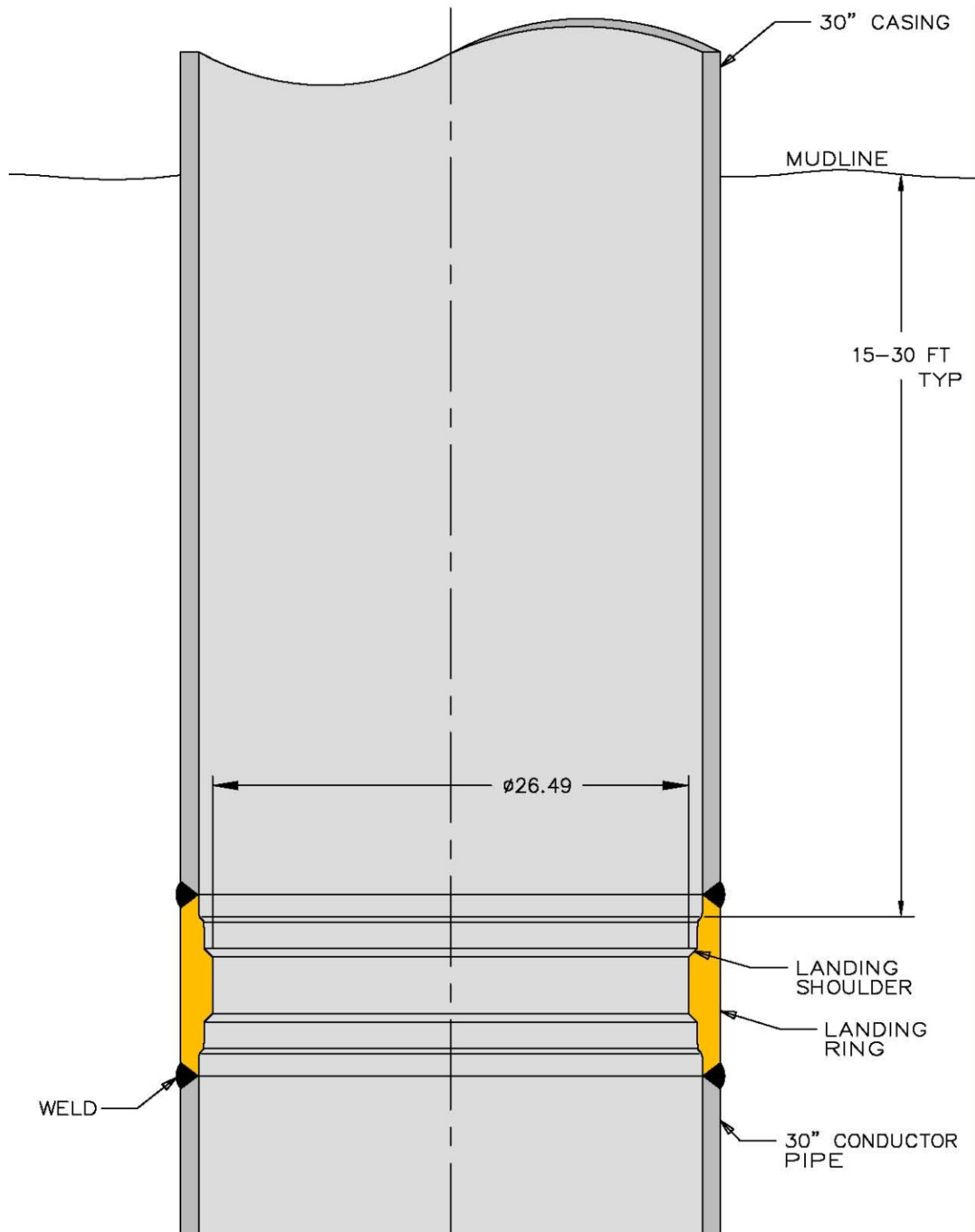
Mudline Suspension System



**CMS Mudline System, 30 x 16 x 11-3/4
13-5/8-in. 5,000 PSI x 16-3/4-in. 5,000 PSI
Tubing Spool Installed**



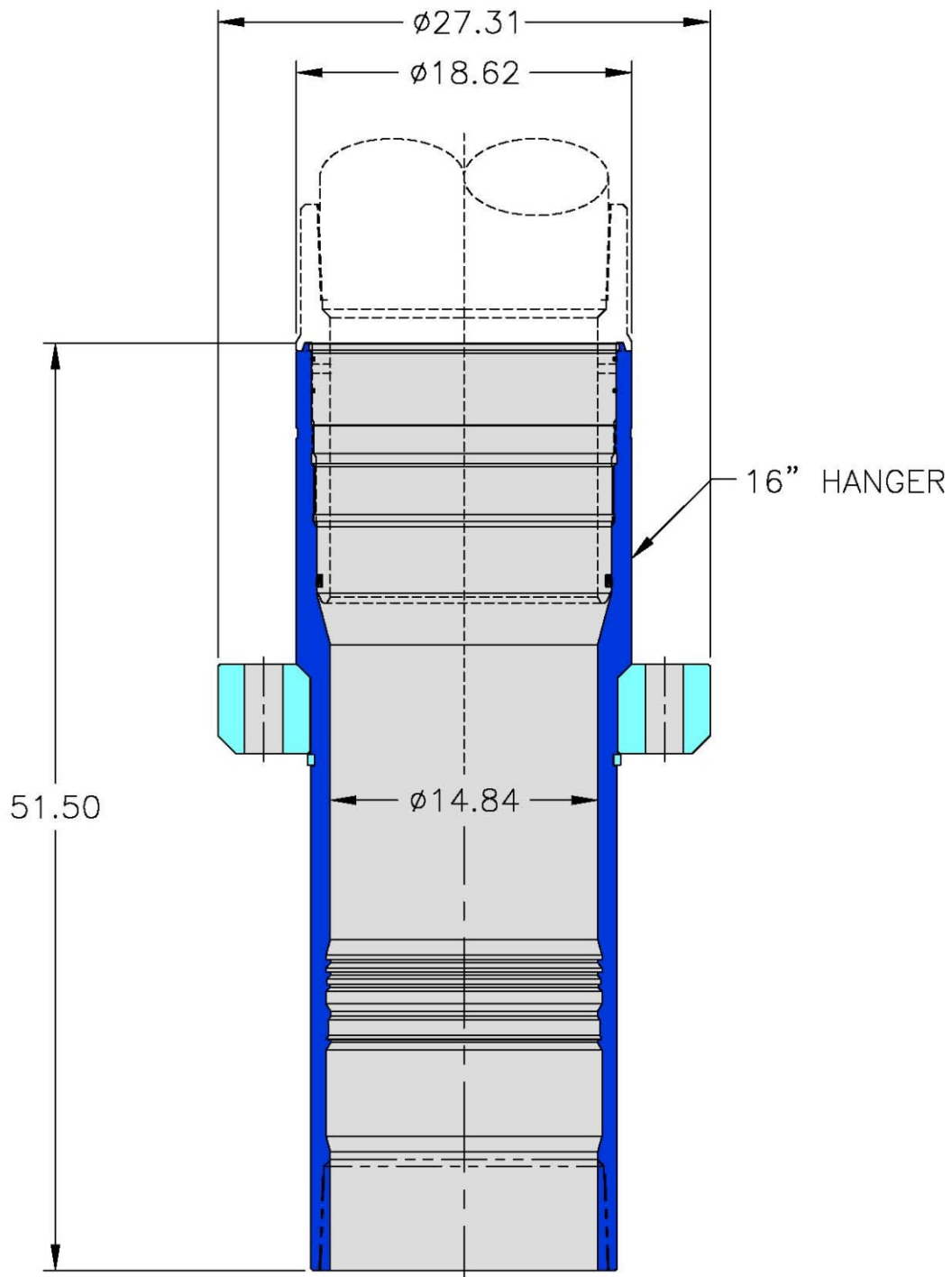
Mudline Suspension System



30-in Conductor Pipe with Landing Ring



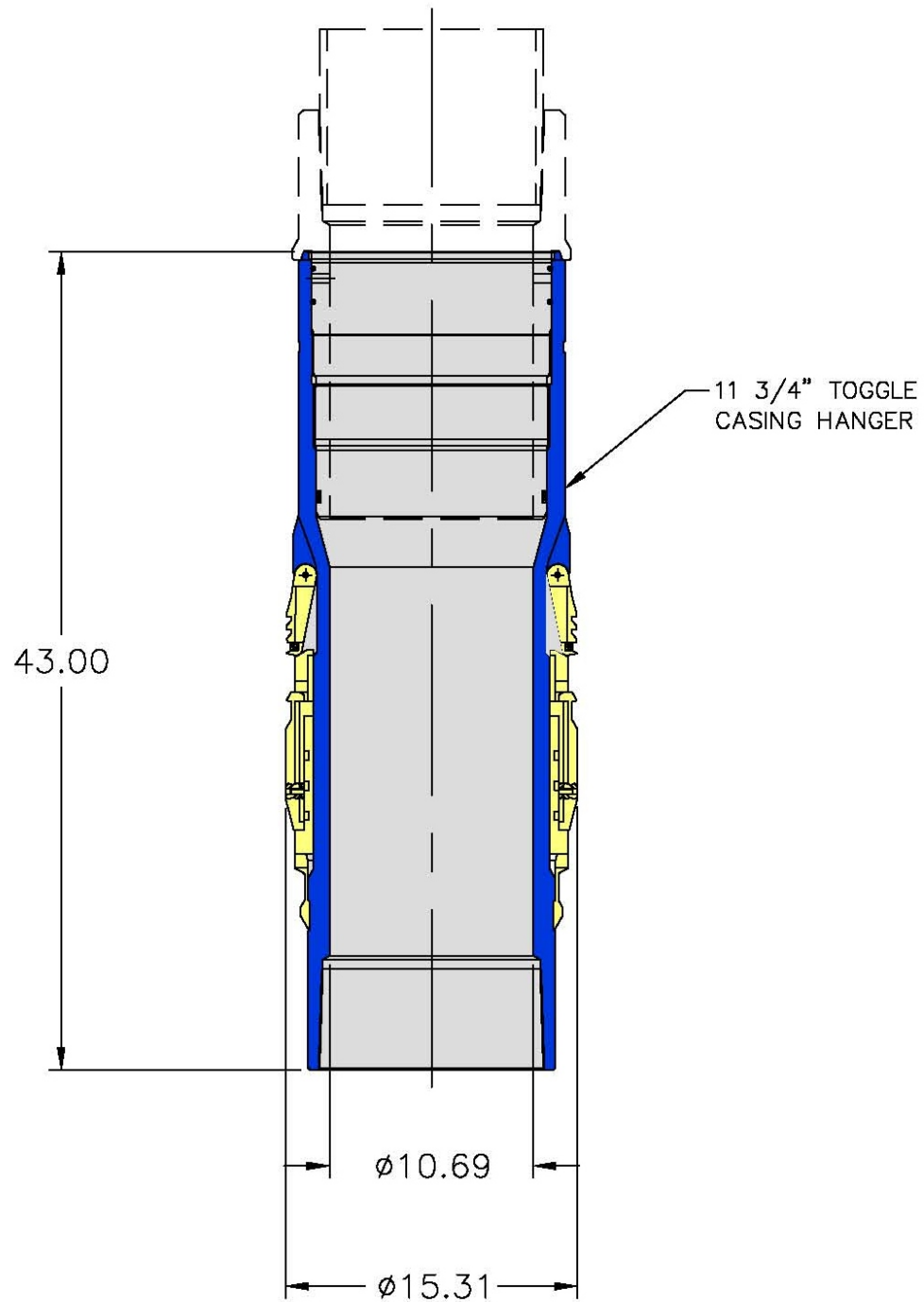
Mudline Suspension System



**CMS Mudline System
Casing Hanger 30" x 16" with Running Tool**



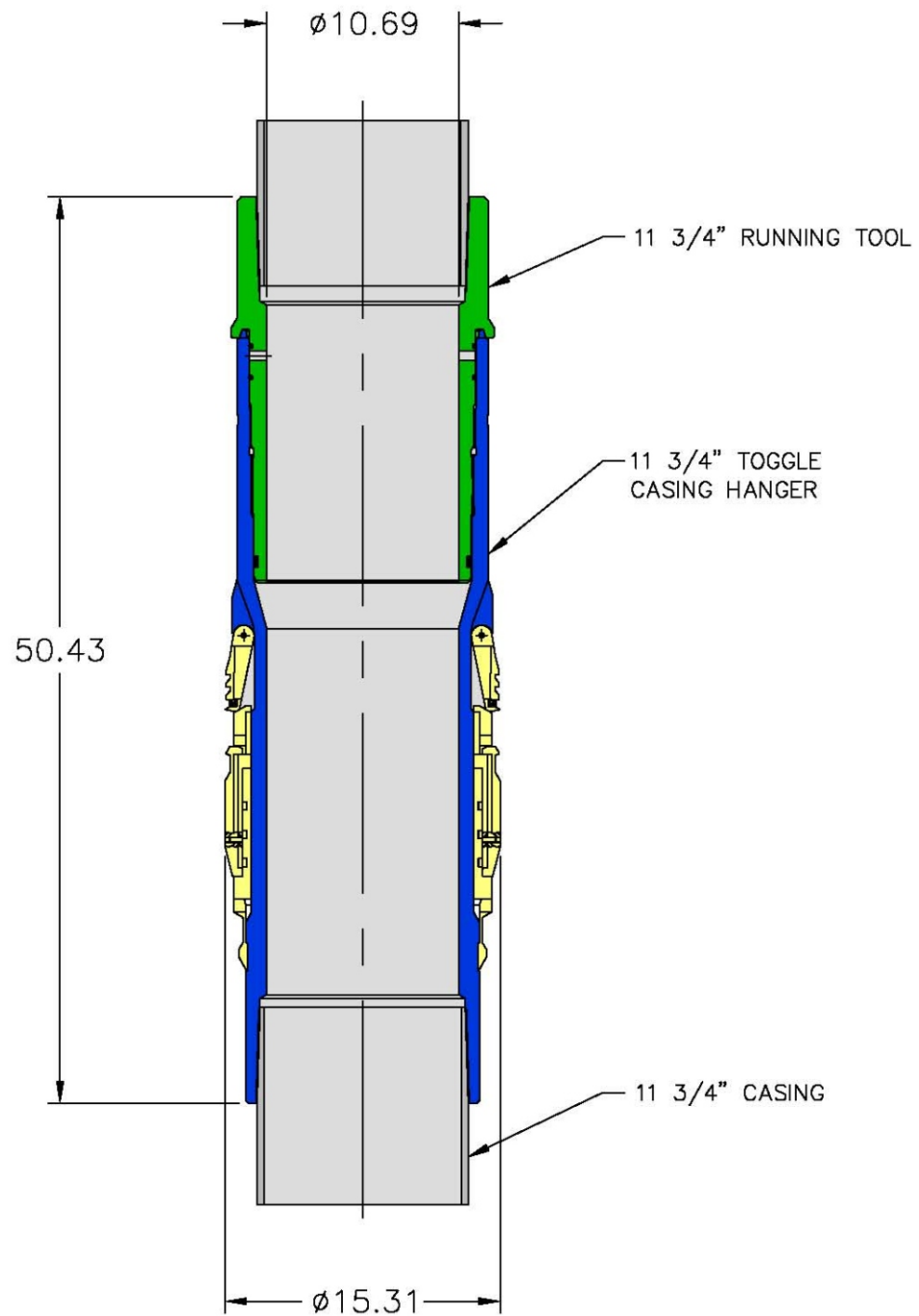
Mudline Suspension System



**CMS Mudline System
Casing Hanger 16 x 11-3/4**



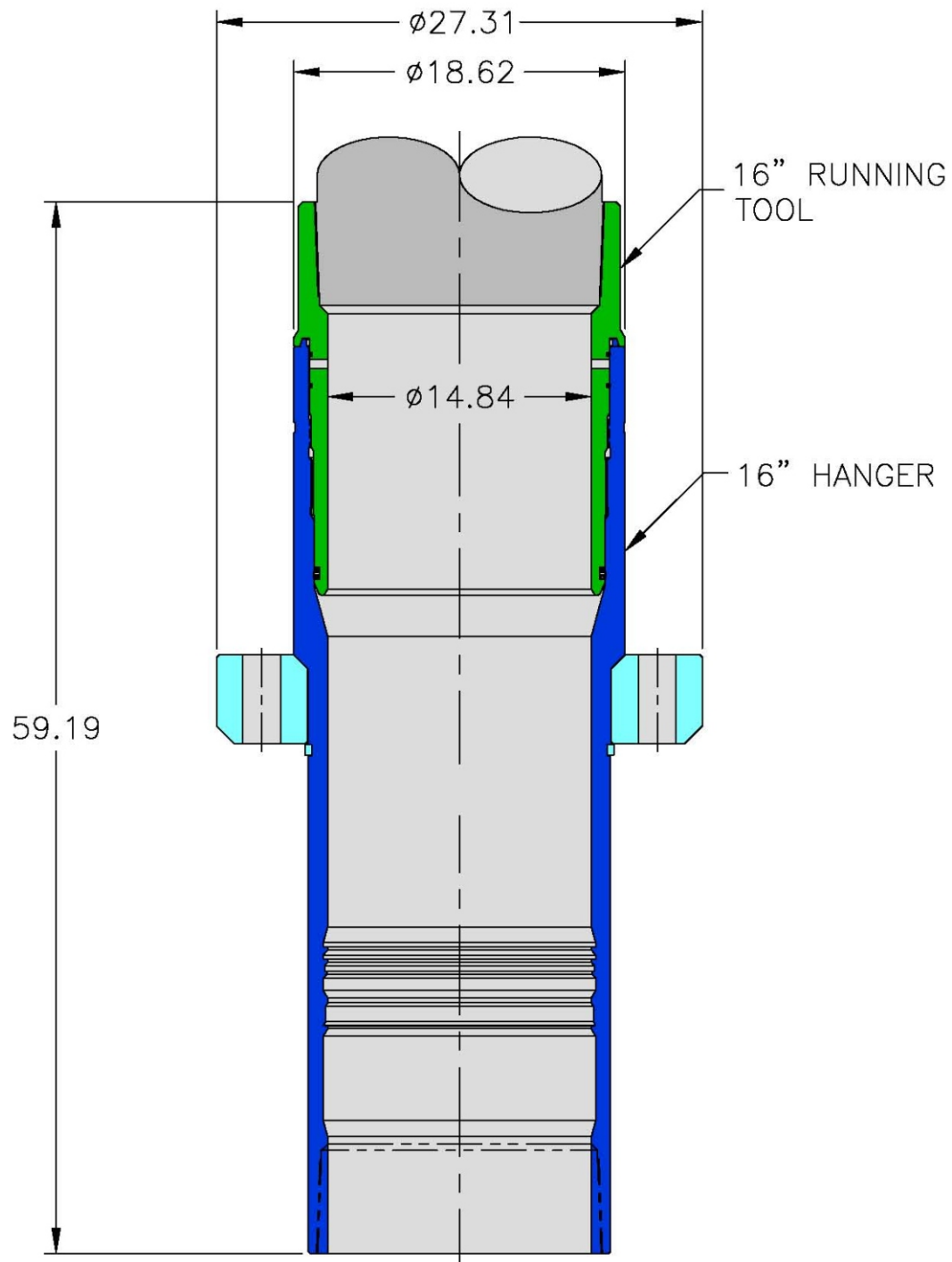
Mudline Suspension System



**CMS Mudline System
Casing Hanger 16 x 11-3/4
with Running Tool**



Mudline Suspension System



CMS Mudline System
Casing Hanger 30" x 16" with Running Tool



Mudline Suspension System

Step 1:

The split threaded ring will be run in this position, which allows it to float in the bottom of the special thread profile (0.15" clearance per side).

Step 2:

Once the tieback tool has landed on the 15 degree taper, clockwise rotation can begin. The split threaded ring has expanded to its natural pitch diameter. At this point, one of two things will happen depending on the higher friction value. These are:

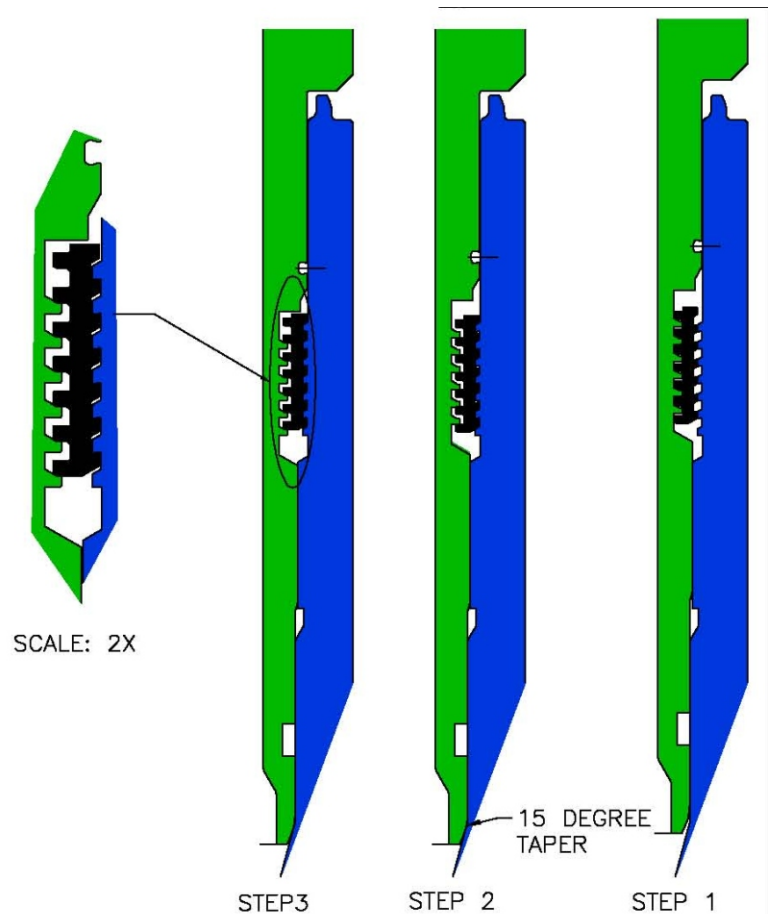
a) High friction between threaded ring and tieback-- the ring and tieback will move down as one unit until the friction between the hanger and ring becomes greater than the ring/tieback.

B) High friction between threaded ring and hanger-- the ring will move upward until it strikes the 7 degree back angle on the hanger thread.

This begins Step 3.

Step 3:

After the threaded ring touches the 7 degree back angle on the hanger's tieback thread, the ring will start to be retained on the correct pitch diameter. This is because the ring is now traveling along the flank angle of the thread. Once at the bottom of the angle, the threaded ring will shoulder on the straight portion of the special thread. This rigidly locks the ring into the outward position and insures the threaded ring will not expand. The tieback tool will continue to be rotated until the proper torque for the metal seal has been achieved.



**9-5/8-in. Stab-in Tieback Tool
Preliminary Design**



Distribution Center
Houston, TX
(713) 466-0752

Field Service
Bridgeport, TX
(940) 683-8285

Field Service
Midland, TX
(432) 561-8508

Field Service
Grand Prairie, AB
(780) 532-3188

Business Development
Houston, TX
(281) 874-6400

Field Service
Corpus Christi, TX
(361) 289-1858

Field Service
Punxsutawney, PA
(814) 938-9662

Field Service
Red Deer, AB
(403) 347-8313

Engineering
Houston, TX
(713) 983-5000

Field Service
Farmington, NM
(505) 599-9469

Field Service
Shreveport, LA
(318) 226-0864

Field Service
Estevan, SK
(306) 634-7600

Sales Office
Midland, TX
(432) 683-1604

Field Service
Hobbs, NM
(505) 397-6035

Field Service
Yukon, OK
(405) 350-3357

Sales Office
New Orleans, LA
(504) 679-9728

Field Service
Houston, TX
(713) 466-0752

Field Service
Calgary, AB
(403) 269-7788

Field Service
Broussard, LA
(337) 837-1899

Field Service
Kilgore, TX
(903) 984-1543

Business Development/Engineering/Field Service
Edmonton, AB
(780) 436-4452



Weatherford®

515 Post Oak Blvd., Suite 600
Houston, Texas 77027
Phone: 713-693-4000
www.weatherford.com

Weatherford products and services are subject to the Company's standard terms and conditions, available on request or at www.weatherford.com. For more information contact an authorized Weatherford representative. Unless noted otherwise, trademarks and service marks herein are the property of Weatherford. Specifications are subject to change without notice.