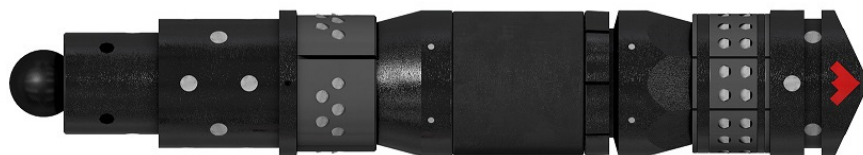


Minima SW Special Weight Composite Frac Plug Accelerates Plug-and-Perf Operation with Average Mill-Out Time of 5 Minutes



The Minima SW special-weight composite frac plug uses powder metal buttons and a proprietary blend of composite material for efficient drillout using conventional tri-cone or junk-mill bits.

Objectives

- Quickly drill out 16 frac plugs following plug and perf operations in a horizontal well.
- Minimize cuttings and debris following drillout to quickly bring the oil well onto production.

Our Approach

- After reviewing the project with the operator, Weatherford well completions experts recommended the Minima SW special-weight composite frac plugs for the plug and perf operation. This field-proven frac plug chassis has performed reliably in more than 33,000 downhole installations. Its powder metal buttons and composite chassis provide superior sealing and anchoring performance, and quickly mill into lightweight cuttings that lift easily to surface during circulation.
- A Weatherford crew deployed 16 Minima SW composite frac plugs to the wellsite. The operator ran the 4 3/8-in. OD frac plugs and set them within the 5 1/2-in. production casing.
- After all frac operations were completed, the operator drilled out the plugs using a tri-cone bit on coiled tubing.

Value to Customer

- The Minima SW composite frac plugs with powder metal buttons milled up easily into small fragments which circulated out of the hole to provide a clean wellbore that was ready for production.
- The plugs drilled out in an average of 5 minutes per plug, which enabled the cleanout phase to be completed quickly and efficiently.



The Minima SW composite frac plug breaks down into small, manageable cuttings, which can be easily circulated out of the wellbore.

LOCATION

West Texas, USA

WELL TYPE

Onshore oil producer

HOLE SIZE AND ANGLE

6-in., 90°

CASING SIZE AND TYPE

5 1/2-in., 20 lb/ft production casing

BOTTOMHOLE TEMPERATURE

150°F (66°C)

CIRCULATING PRESSURE

6,200 psi (42.75 MPa)

CIRCULATING PRESSURE

1,400 psi (9.65 MPa)

TOTAL DEPTH

15,355 ft (4,680 m)

LATERAL LENGTH

5,300 ft (1,615 m)

PRODUCTS/SERVICES

Minima SW composite frac plugs with powder metal buttons and top ball configuration

