

CalView® Tool and TVision Software

Enable Deepwater Well Completion, Avert \$200 Million Cost Sidetrack



The slightest issues in the metal integrity, such as this casing shift (left), will be detected by the CalView service. The CalView service magnifies the problem (right) for improved clarity.

LOCATION
US GOM

WELL TYPE
Deep water, sub salt

FORMATION
Salt section

CASING SIZE
10-1/8 in.

DEPTH
16,800 ft (5,120.64 m)

PRODUCTS/SERVICES
CalView tool
Interpretation and Evaluation Services
TVision analysis software

Objectives

- Assist a deep water operator in determining why, when attempting to clean out their cased well for completion, cleaning tools would not pass through a specific depth interval.
- Deliver answers in a timely manner to minimize idle rig time.

Our Approach

- Weatherford logged the well with the CalView tool and obtained data revealing that the casing had shifted within the salt section of the well for an unknown reason.
- Analysis of the data by Weatherford Interpretation & Evaluation Services (IES) indicated that the overall integrity of the casing had not been compromised.
- IES analysts worked with the operator to run multiple drift diameter scenarios that provided a realistic image of the downhole situation. The client was able to determine that the packer originally chosen for the completion would not fit through the buckle.

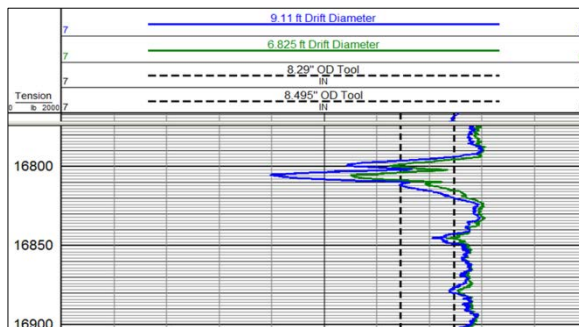
* CalView is a registered trademark of Weatherford in the US, Canada, and the European Union.



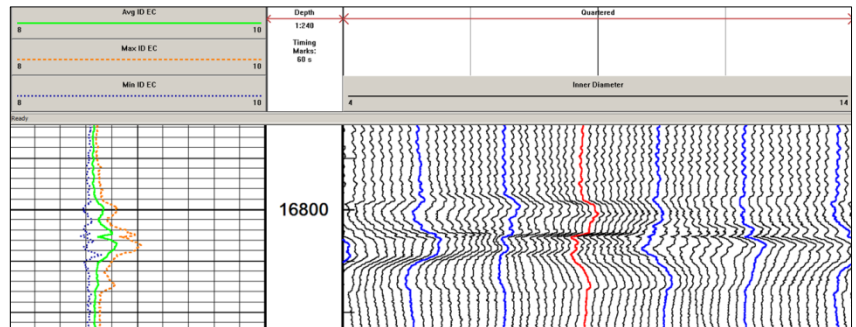
CalView® Tool and TVision Software Enable Deepwater Well Completion, Avert \$200 Million Cost Sidetrack

Value to Client

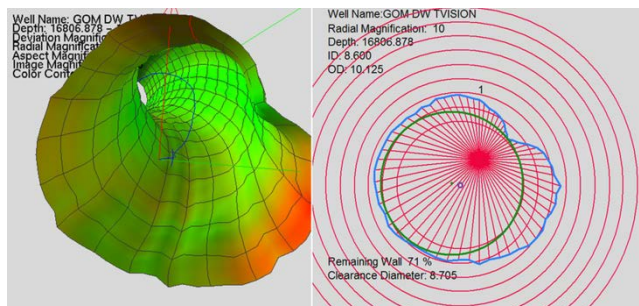
- The CalView tool was able to successfully log the well and provided data that eliminated the need to sidetrack the well, saving approximately US \$200 million.
- Snapshots of the 3D TVision images were delivered to the client, enabling quick decision making, even outside normal working hours.
- The Weatherford CalView tool and IES analysis provided data and images enabling the client to complete the well efficiently and maintain well integrity.



Drift diameter analysis that confirms neither the cleaning nor the suggested packer will fit through the buckle



Log plot over troubled area



Possible wall loss inside deformation

