



# Weatherford®

## REAL RESULTS

### Shallow-Angle QuickCut™ Casing Exit System Performs Exit Through Dual Casing Strings, Saves Rig Time on Offshore Platform

#### Objectives

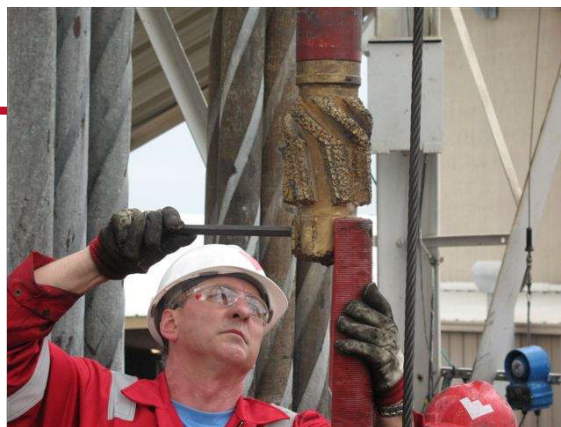
- Perform a single-trip casing exit through dual casing strings, including 30 ft (9 m) of open hole with an uncemented inner casing string.
- Minimize rig time and associated expense.

#### Results

- The 9 5/8-in. casing was perforated to gauge the suitability of performing a cement squeeze into the uncemented “B” annulus. Results suggested a successful cement squeeze was unlikely and a decision was made to continue with the casing exit.
- Weatherford's 9 5/8-in. shallow-angle *QuickCut* casing exit system with RHS-type anchor were deployed.
- The whipstock was set at 6,520 ft (1,987 m) and the window and 30-ft rathole were completed in 9 hr without losses, providing the operator with the confidence to continue drilling.
- The entire milling assembly (lead, secondary and steering mills) was within acceptable gauge tolerance following completion of the milling event through uncemented casing strings.
- Gauge retention eliminated the need for additional mill runs typically associated with milling in uncemented tubulars.

#### Value to Client

- Weatherford's shallow-angle *QuickCut* casing exit system enabled the operator to successfully perform a casing exit through multiple uncemented casing strings in one run, mitigating losses and saving approximately 24 hr rig time.



The use of Weatherford's dual-string casing exit enabled the operator to successfully perform a casing exit through two casing strings in one run with the uncemented inner casing string, breathing new life into mature assets.

#### Location

UK Sector, North Sea

#### Well Type

Offshore platform

#### Casing Size

- 9 5/8-in., 47-lb/ft L80
- 13 3/8-in., 68-lb/ft N80

#### Setting Depth

6,520 ft (1,987 m)

#### Products/Services

- Shallow-angle *QuickCut* casing exit system
- RHS-type packer anchor

Weatherford  
Ron Barker  
Global GM, Re-entry Services  
ron.barker@weatherford.com