



Weatherford®

REAL RESULTS

Shallow-Angle QuickCut™ System Mills Window in Premium Q125 Casing in One Trip, Maintains Full-Gauge Cutting Structure

Objectives

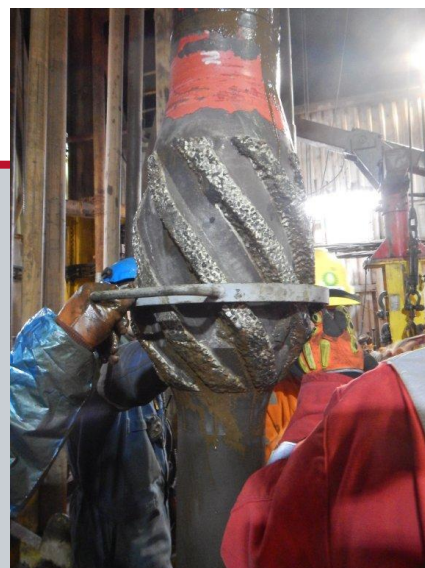
- Mill a window in 13 5/8-in. Q125 premium casing and 28 ft (8.6 m) of rathole in one trip, to accommodate a kickoff mud-motor assembly.
- Create an additional 28-ft (8.6-m) rathole to pass through the slick mud-motor kickoff assembly and drill the initial 328-ft (100-m) openhole section.
- Use a hydraulic-actuated whipstock system that does not require a “false bottom” to actuate the anchor.
- Ship the whipstock system within 10 hours to avoid the impending weather system expected to cause days of delay.

Results

- Weatherford was able to deliver a hydraulic-set whipstock and packer system within the restricted timeframe to meet the midnight departure of the supply vessel.
- The premium casing window was successfully milled and the initial openhole section was drilled in one trip.

Value to Client

- The hydraulic shallow-angle QuickCut system with permanent packer anchor provided the required platform to successfully complete a casing exit through a large, high-grade, high-tensile casing string in a single trip.
- The integral packer anchor eliminated the associated costs of installing a false bottom for anchor activation and provided an isolation barrier above the stuck fish.
- Quick delivery of the Weatherford equipment to the waiting supply vessel prevented a significant shipping delay and costly days of nonproductive time.



Weatherford promptly delivered a shallow-angle QuickCut casing exit system that milled a casing window and drilled an additional rathole in one trip, which prevented costly delays and reduced rig time.

Client

BP Exploration Operating Company Limited

Location

UK, North Sea

Formation

Lark Shale Mudstone

Well Type

Offshore, semisubmersible

Water Depth

304 ft (92.6 m)

Wellbore Inclination

Vertical

Hole Size

12 1/4 in. (215.9 mm)

Casing Size

13 5/8-in., 88 lb/ft Q125

Rathole Length

56 ft (17.2 m)

Depth

4,796 ft (1,462 m)

Products/Services

- Re-entry Services
- Shallow-angle casing-exit system with PHS-type integral packer

Ian Gerrie
Weatherford, Well Construction, Technical Sales
ian.gerrie@eu.weatherford.com