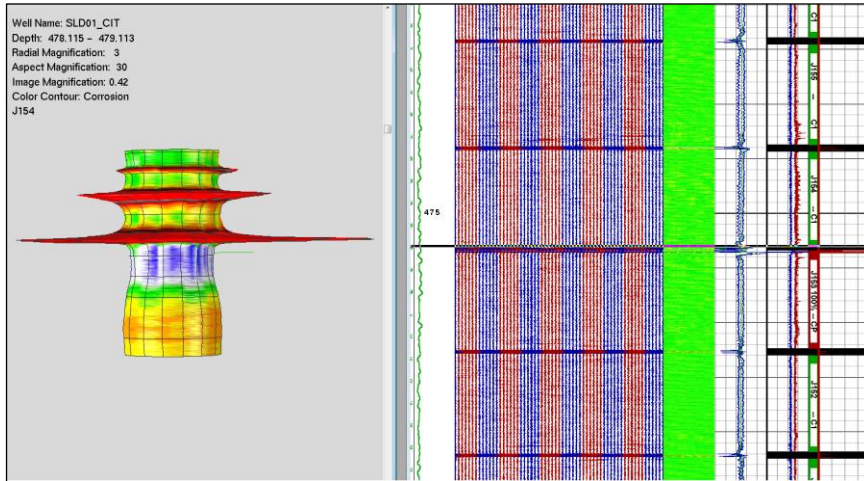


SecureView® Suite Pinpoints Casing Collar Split, Enables Recompletion of 50-Year-Old Well



Processing data from the high-resolution Weatherford SecureView® suite produced the 3D presentation above indicating a casing collar defect in the mature well.

Objectives

- Provide a detailed evaluation of well integrity that will enable the client to choose the most suitable and cost-effective method of recompleting a well drilled in 1965. The client wanted to fish 3.5-in. parted tubing, retrieve the completion, and inspect the well for casing corrosion and cement quality before recompleting the well.

Our Approach

- During the workover, a Weatherford Wireline team ran a SecureView well integrity suite (high-resolution CalView®, FluxView®, and BondView® tools) in the 7-in. casing.
- Immediately afterwards, a petrophysicist from the Weatherford Interpretation and Evaluation (IES) Service group processed the data from that survey and provided a detailed joint summary identifying the maximum penetration for each casing joint. For improved data visualization, the client also received a 3D interactive presentation with the plots of CalView and FluxView data.
- The interpretation of these survey products confirmed a serious defect near a casing collar. Both the CalView and FluxView data showed 100% penetration, indicating a hole in the casing.
- Examination of the pulled casing then confirmed the casing defect, which was likely caused by an overtorqued connection.

LOCATION
Netherlands

WELL TYPE
Injection

CASING TYPE AND SIZE
7-in., 26/29 PPF

- PRODUCTS/SERVICES**
- SecureView suite (CalView, FluxView, and BondView tools)
 - Interpretation and Evaluation Services
 - Radial cutting torch (RCT)
 - Motorized cutting tool (MCT)
 - Bridge plugs



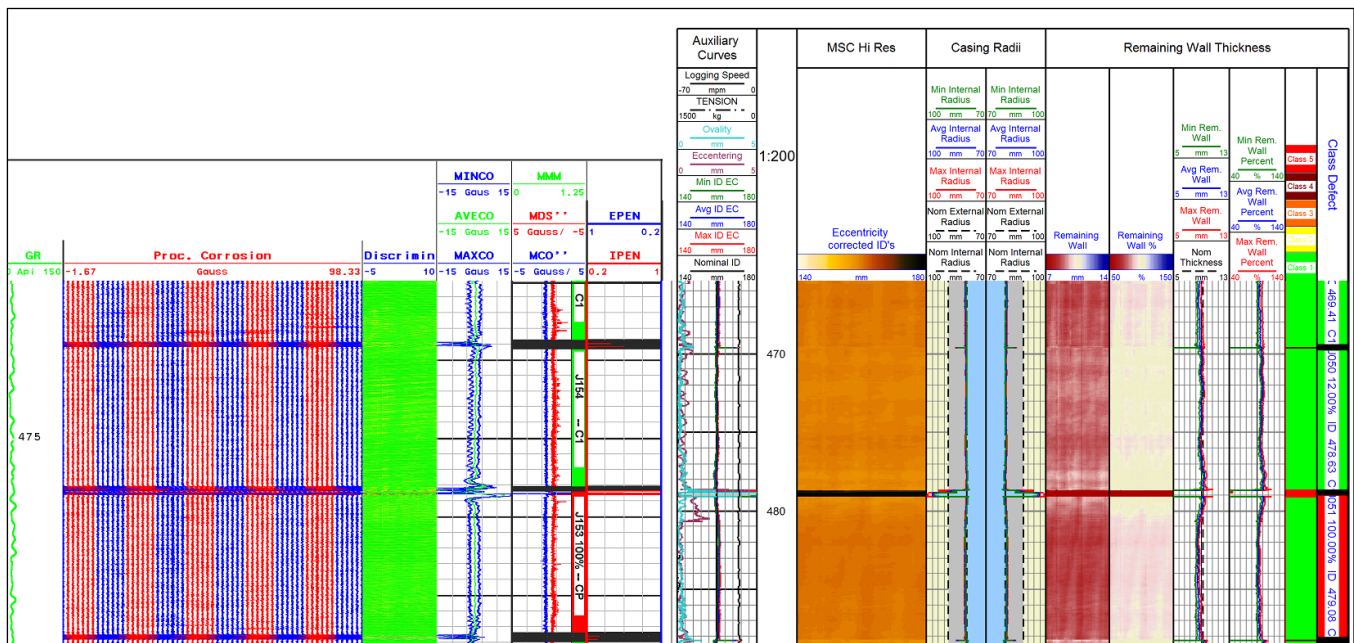
Physical examination of the pulled casing verified the analysis of data from the Weatherford SecureView suite and revealed the casing collar split shown above.



SecureView® Suite Pinpoints Casing Collar Split, Enables Recompletion of 50-Year-Old Well

Value to Client

- The Weatherford SecureView well integrity suite and interpretation service helped the client to define their recompletion strategy.
- As a result of this workover, the client expects an annualized savings of EUR 400,000 in reduced transportation costs for water disposal and an increase in their field gas production by 100 to 150 DEC.



IES interpretation plots of CalView and FluxView data indicate casing defect near the collar at approximately 480.0 m MD.

* SecureView is a registered trademark of Weatherford in the US.

