



Weatherford®

REAL RESULTS

RapidFlo™ Plungers and Monitoring with CygNet® Software Increased Production in Declining Horizontal Gas Wells

Objectives

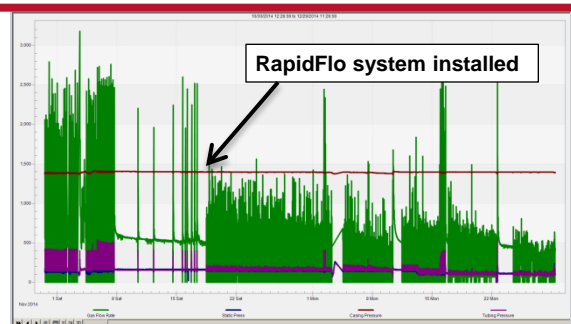
- Improve production in five declining unconventional gas wells. The horizontal gas wells were experiencing liquid loading problems, and the challenge was to find a low-cost solution to redefine the steep decline.

Results

- Weatherford reviewed the available well information and determined that plunger lift was an economical solution for the five wells. Because plunger lift would be new to this field, the client chose to install conventional plungers in the wells to test their effectiveness.
- Once the wells were operating, Weatherford reviewed the results of the new plunger lift system and observed that the wells had additional uplift potential if the systems were changed from conventional to continuous plungers. To achieve these additional gains, Weatherford installed a RapidFlo plunger in each of the wells.
- All the wells were monitored using the CygNet software, and Weatherford provided both on-site and in-office CygNet training to the field and office engineers.

Value to Client

- With the Weatherford RapidFlo continuous plungers and CygNet software, the client saw production increase up to the redefined decline curve on all of the wells, resulting in a 200 mcfpd increased gas rate and 7 BFPD per well.
- As an added benefit, the Weatherford plunger lift system required little to no shut-in time, so the client avoided over ranging gas meters and prevented large slugs of fluid from impacting their facilities.



The chart above shows that after installation of the RapidFlo plunger system with a conventional plunger, high flow rate spikes declined.

Location

McMullen, TX

Well Type

Onshore, horizontal gas

Number of Wells

5

Tubing Size

2-3/8 in.

Casing Size

4-1/5 in.

End of Tubing (EOT)

12,000 ft (3,658 m) with a 6,000-ft (1,829-m) lateral

Products/Services

- RapidFlo plunger
- CygNet software

Weatherford
po-info@weatherford.com