



# Weatherford®

## REAL RESULTS

### DwC™ System Sets Casing in Problematic Papua New Guinea Well in a Single Trip, Saving Operator \$275,000

## Objectives

- Run 13 3/8-in. casing to a total depth (TD) in a relatively unstable formation after a previous attempt using conventional technology proved unsuccessful. The initial attempt to run 13 3/8-in. casing to TD became stuck at 1,690 ft (515 m), resulting in 35 hr of nonproductive time (NPT) to free the casing and pull out of hole. Once the casing was retrieved, a wiper trip was performed, resulting in another 61 hr of NPT.

## Results

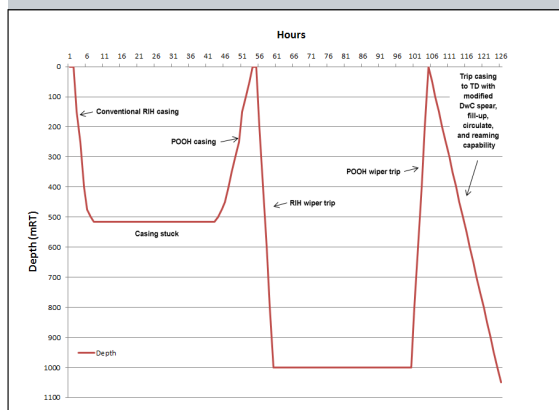
- Weatherford's Total Depth Solutions team recommended using the modified drilling-with-casing (DwC) spear, coupled with a reamer-type shoe, to enable fill-up, circulation, and reaming.
- The modified DwC spear and reamer-type shoe were deployed, circulated, and reamed past the restrictions, achieving TD in a single run and enabling the operator to get back on schedule.

## Value to Client

- The casing was reamed in and reached TD in just 19 hr, saving approximately US\$275,000 in rig time and associated costs.
- This innovative approach set a benchmark for future casing running operations in Papua New Guinea.
- The operation was performed efficiently without any recordable safety incidents.



Weatherford's DwC internal casing drive system enhances conventional casing makeup systems and offers reliable, highly capable performance when simultaneously drilling the hole and running casing.



This time vs. depth graph illustrates the efficiency of the DwC system in reaching TD where previous, conventional technology failed.

### Location

Papua New Guinea

### Formation

Upper Orubadi and Lower Darai limestone

### Well Type

Onshore, gas-condensate producer

### Hole Size

16 in.

### Setting Depth

3,415 ft (1,041 m)

### Casing

13 3/8-in., 68-lb/ft L-80 BTC

### Products/Services

- Modified DwC spear
- Reamer-type shoe

Weatherford  
Drilling-with-Casing (DwC)  
dwc@weatherford.com