

Innovative Chrome Handling Protects Pipe Integrity With Zero Incidents, Bests Expectations in First U.S. Land Run of 25Cr-80 Tubulars

Objectives

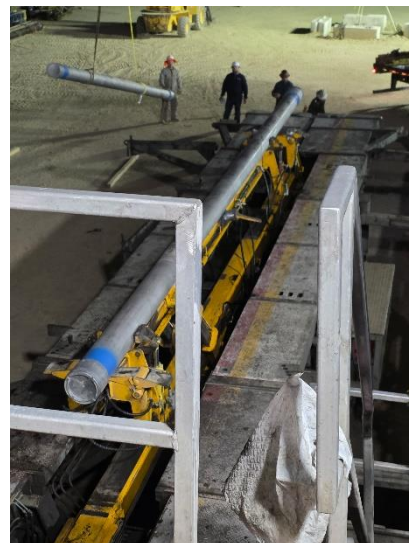
- Successfully run 25Cr-80 casing for the first time on U.S. land.
- Identify specific equipment requirements to address the unique hardness and sensitivity of chrome tubulars.
- Ensure zero damage to casing and maintain operational efficiency.

Our Approach

- In collaboration with the customer, Weatherford experts leveraged the Weatherford AI-assisted knowledge base to identify specific chrome running and handling procedures. Additionally, the team verified material handling protocols with Vallourec/VAM-USA.
- As a result of identifying a gap in the chrome casing handling equipment, engineers selected a hydraulic spider that met the rigorous Weatherford chrome-handling standards.
- The team selected customized grit face dies for the 9 5/8-in. casing and specialty coated dies for the Volant CRT and power tongs.
- Weatherford also collaborated with the pipe supplier to confirm that hydraulic slips were not required for 9 5/8-in. casing due to the unique surface hardness achieved through a specialized manufacturing process.

Value to Customer

- **Zero Incidents:** The casing was run without any damage or safety incidents. Speed limits were in place based on connection makeup procedure and the pipe handling arm in place on the rig.
- **Operational Efficiency:** The 9 5/8-in. casing was run in 28 hours and the 7-in. liner in 21 hours—both faster than customer expectations.
- **Customer Satisfaction:** The successful execution led to additional work being awarded to Weatherford.



The 9 5/8-in. 25Cr-80 Vam21 on the pipe handler.

LOCATION

Kern County, California

WELL TYPE

Carbon capture

HOLE SIZE

9-5/8 in. and 7 in.

CASING SIZE AND TYPE

9-5/8 in. x 43.5 ppf 25Cr-80, Vam21

LINER SIZE AND TYPE

7 in. x 26 ppf 25Cr-80, Vam21

DEPTH

9-5/8 in.: 6,500 ft (1,981 m)
7 in.: 2,600 ft (792 m)

OTHER

The rig has a small floor, which makes operations more difficult and communication between the rig crew and casing crew extremely important.

PRODUCTS/SERVICES

- Tubular running services

