



# Weatherford®

## REAL RESULTS

### Mechanized Casing Running with TorkWrench™ 10-100, PowerFrame® III Systems, HMBU Enhances Safety and Efficiency, Saves \$5.7 Million

#### Objectives

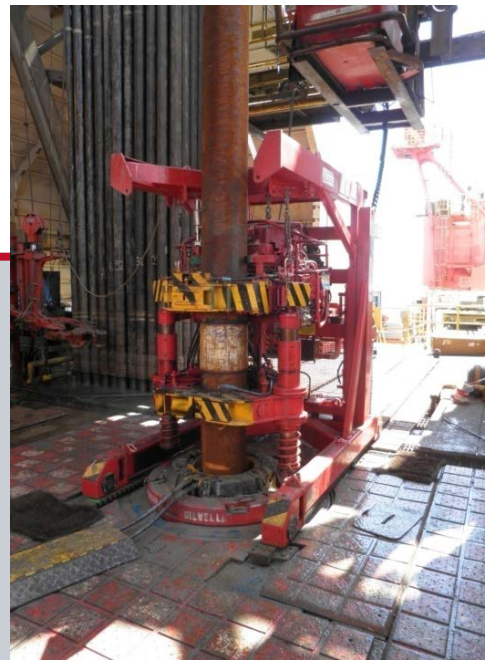
- Improve running efficiency by refurbishing a mobile offshore drilling unit (MODU) with mechanized casing technology.
- Enhance operational safety with elimination of manual casing-handling and the associated risks to personnel.

#### Results

- Weatherford's tubular running services introduced the mechanized-casing solution, deploying the *PowerFrame* III tong-positioning system to install both 14-50 and 7.6-30 mechanized power tongs.
- Chosen by the operator for high-speed connections, the *TorkWrench* iron roughneck was integrated with the deck floor using the *PowerFrame* system and recorded up to two joints per hour faster than the previous system. The combined system enabled the operator to run both casing and drillpipe, and the crew commented on ease of installation and operation.
- The hydraulic makeup/breakout unit (HMBU) was installed on the pipe deck, enabling offline makeup and breakout capabilities.
- This mechanized suite of equipment decreased human intervention and critical-path time and increased run rates as high as 19 joints per hour compared with previous conventional-equipment runs.

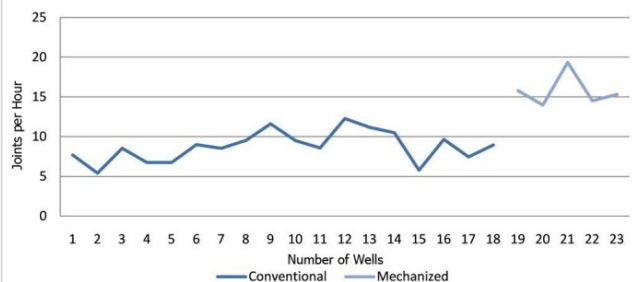
#### Value to Client

- Weatherford's mechanized equipment eliminated the manual handling of conventional casing tongs, enhancing overall safety and efficiency.
- The *PowerFrame* system easily interfaced with the rig floor and enabled the operator to safely and efficiently switch between casing- and drillpipe-running operations.
- Using the *TorkWrench* iron roughneck increased tripping rates for significant time savings.
- The HMBU enabled offline work, saving the client approximately US\$5.7 million in online rig-floor activity over the 20-well campaign.



Over the 20-well campaign, Weatherford's mechanized equipment enabled the operator to reduce personnel risk, improve run rates, and save hours of online rig time and associated costs.

#### Conventional vs. Mechanized Casing Operations



The graph above illustrates the increased number of joints run per hour by replacing the MODU's conventional casing technology with mechanized equipment.

#### Location

Australia

#### Well Type

Offshore

#### Products/Services

- Tubular running services
- Mechanized 7.6-30 hydraulic tubing tong
- Mechanized 14-50 high-torque casing tong
- *PowerFrame* III tong-positioning system
- *TorkWrench* 10-100 iron roughneck
- HMBU
- StabMaster® pipe-alignment system

Weatherford  
Shane Ferguson  
Account Manager, Australia  
TRS/Total Depth services  
shane.ferguson@ap.weatherford.com

Weatherford products and services are subject to the Company's standard terms and conditions, available on request or at weatherford.com. For more information contact an authorized Weatherford representative. Unless noted otherwise, trademarks and service marks herein are the property of Weatherford and may be registered in the United States and/or other countries. Weatherford products named herein may be protected by one or more U.S. and/or foreign patents. For more information, contact patents@weatherford.com. Specifications are subject to change without notice. Weatherford sells its products and services in accordance with the terms and conditions set forth in the applicable contract between Weatherford and the client.