



Weatherford®

REAL RESULTS

PowerFrame® II Tong-Positioning System and TorkWrench™ Iron Roughneck Enable Safe, Efficient Drilling for More Than a Decade; Save Millions in NPT and LTI

Objectives

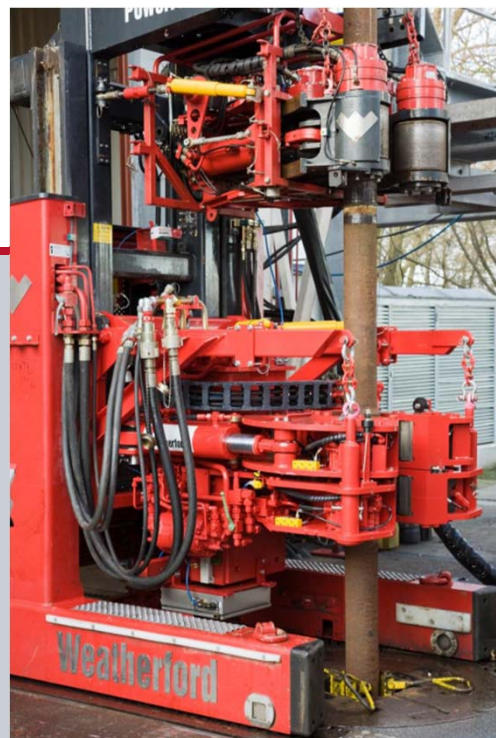
- Increase safety and efficiency of drilling operations.
- Create a fully integrated drilling package compatible with the client's zone management system.

Our Approach

- Weatherford Tubular Running Services deployed a fully integrated drilling package including a PowerFrame II tong-positioning system and a TorkWrench 10-145 iron roughneck. The equipment is mechanized for hands-free operation from the driller's chair.
- The TorkWrench iron roughneck enabled efficient makeup and breakdown of BHA components, which resulted in low drillpipe runtimes. The tool also ensured reliable joint connections, which limited the number of pipe repairs required.
- In more than 10 years of operation, the rig has recorded minimal nonproductive time (NPT) and zero recordable lost-time incidents (LTI).

Value to Client

- The PowerFrame II tong-positioning system and the TorkWrench 10-145 iron roughneck have run on this rig since 2004 without a single LTI. According to OSHA, the average cost of an LTI for a large drilling contractor is approximately US\$1.2 million. Ten years of operations without an LTI represents potentially tens of millions of dollars saved.
- The TorkWrench iron roughneck has an average trip time of 1 minute and 15 seconds—approximately 25 percent faster than typical iron roughnecks. Over the life of the system, the high spinning time of the TorkWrench iron roughneck has saved the operator a substantial amount of rig time.



The combination of the PowerFrame II tong-positioning system and the TorkWrench 10-145 iron roughneck mechanizes pipe handling to increase the safety and efficiency of drilling operations.

Location

Gulf of Mexico

Well Type

Offshore

Hole Sizes

8.5 to 28 in.

Drillpipe Size

5-7/8 in.

Well Depths

5,000 to 25,000 ft (1,524 to 7,620 m)

Products/Services

- Tubular Running Services
- PowerFrame II tong-positioning system
- TorkWrench 10-145 iron roughneck

Weatherford
Trey Stephens
Technical Sales Specialist – Tubular Running Services
Trey.Stephens@weatherford.com