

SandSure™ Fines-Control Agent

Maximizes sand-free flow rate and boosts total reservoir performance

Applications

- Sandstone, coal, and shale formations
- Slickwater, linear-gel, gravel-pack, and frac-pack operations

Features and Benefits

- Patented formula minimizes erosion of the near-wellbore area, controls formation sand, and mitigates fines migration.
- Alters the zeta potential of sand and fines to near neutral, which binds fines, reduces formation damage, and optimizes well productivity.
- Enhances treatment-fluid load recovery and leaves the formation in the optimal wetted condition.
- Remains ductile and agglomerative to adapt to changing reservoir conditions.

Description

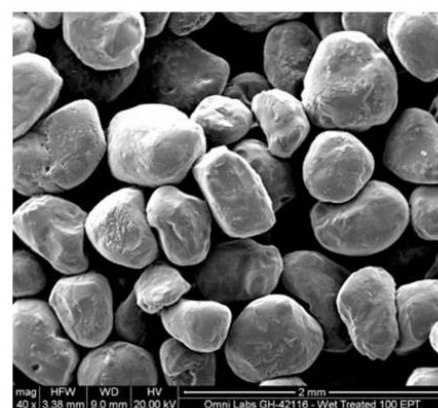
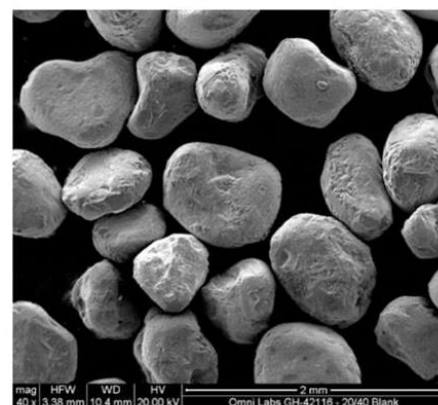
Weatherford SandSure fines-control agent is a patented chemical solution that maximizes the sand-free flow rate, boosts total reservoir performance, and reduces lifting costs. The unique formula modifies zeta potential of the formation, proppant surfaces, and fines to bring them to near neutral value. This increases proppant conductivity and binds fines in-situ to avoid flow restrictions.

SandSure fines-control agent offers flexible deployment opportunities, including on-the-fly in slickwater, linear-gel, and borate-crosslinked-gel applications. It also can be added to stimulation fluid on the fly during fracturing or sand-control operations.

Each SandSure fines-control agent deployment depends on proppant quantity, and chemical loadings for remedial cleanup treatments are engineered for each application.

Specifications

Appearance	Clear, dark liquid
pH	5.7 to 6.9
Density	8.59 to 8.76 lb/gal
Solubility in water	Dispersible
Specific gravity	1.03 to 1.05
Ionic charge	Cationic



SandSure fines-control agent alters the zeta potential of sand and fines to near neutral, which binds fines, reduces formation damage, and optimizes well productivity. At top is an untreated formation, and below is post treatment.

