



Cement Basket

Weatherford's cement baskets protect weak formations from hydrostatic pressures exerted by the weight of cement columns. Baskets are run above weak formations on casing, tubing, and liner strings and can be used in single- or multistage cement jobs. Each basket is made of a high-strength metal and features overlapping fins to provide maximum flexibility and fluid passage while maintaining optimum support characteristics.

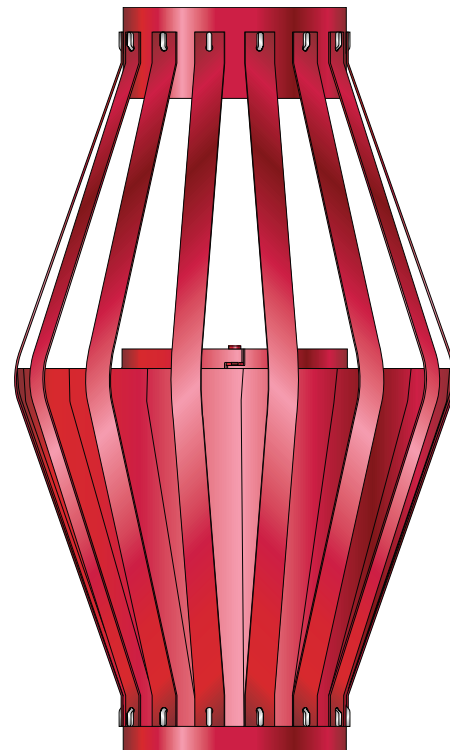
Cement baskets are available in latch-on or slip-on configurations and should be installed over stop collars to prevent axial movement, if not provided.

Applications

- Cased-hole or openhole applications
- Wellbores requiring cement support in the annulus
- Cementing weak formations that may break down due to excessive hydrostatic pressures

Features, Advantages and Benefits

- High-strength metal can withstand excessive hydrostatic pressures exerted by cement columns, preventing formation damage and thereby significantly reducing costs and nonproductive time.
- Overlapping metal fins are flexible, aiding the basket to form a bridge in the annulus to prevent cement from falling.



Cement Basket
with Stop Collar provided



Cement Basket

Specifications

Casing/ Tubing Size (in./mm)	Latch-On Type		Slip-On Type		Total Length (in./mm)	Basket OD (in./mm)	Minimum Hole Size (in./mm)
	Product Number	Number of Bows	Product Number	Number of Bows			
3-1/2 88.9	—	—	1835731	10	24-1/2 622.3	11-1/2 592.1	5 127
4-1/2 114.3	—	—	1835741	10	24-1/2 622.3	12-1/2 317.5	6 852.4
5-1/2 139.7	1825751	12	1835751	12	24-1/2 622.3	13-1/2 342.9	7-1/4 184.1
7 177.8	1825770	14	1835770	14	24-1/2 622.3	15 681	8-3/4 222.2
7-5/8 193.6	1825775	14	1835775	15	24-1/2 622.3	15-5/8 396.8	9-1/2 241.3
8-5/8 219	1825785	16	1835785	16	24-1/2 622.3	16-5/8 422.2	10-5/8 269.8
9-5/8 244.4	1825795	18	1835795	18	24-1/2 622.3	17-5/8 347.6	11-5/8 295.2
10-3/4 273	1825710	18	1835710	19	24-1/2 622.3	18-3/4 476.2	12-3/4 323.8
11-3/4 298.4	1825711	20	1835711	21	24-1/2 622.3	19-3/4 501.6	13-3/4 349.2
13-3/8 339.7	1825713	24	1835713	24	24-1/2 622.3	21-3/8 542.9	15-1/2 393.7
16 406.4	1825716	28	1835716	28	24-1/2 622.3	24 609.6	18 457.2
18-5/8 473	1825718	34	1835718	34	24-1/2 622.3	26-5/8 676.2	20-5/8 523.8
20 508	1825720	34	1835720	34	24-1/2 622.3	28 711.2	22 558.8

Options

- Latch-on and slip-on configurations are available. Please contact a Weatherford representative for further information.