

eHydraulics Software Application

Calculates hydraulics information at the wellsite and transmits data to a secure server in near real time

Applications

- Real-time hydraulics calculating and reporting

Features and Benefits

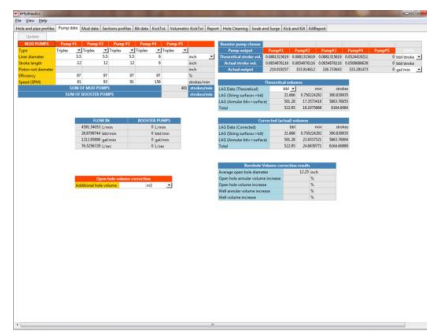
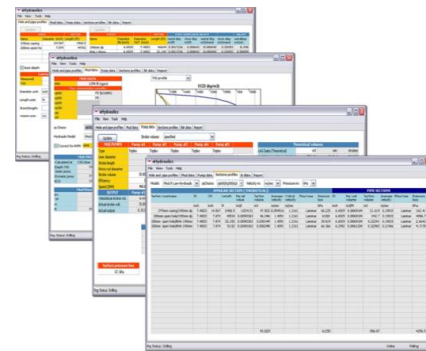
- Provides hydraulics calculations for well volume, lag, bits, mud pressure, equivalent circulating density, and pressure losses
- Provides real-time hydraulics data when combined with a WellWizard® server and used in online mode; provides hydraulics modeling in offline mode
- Enables a secure data connection between the software application and the WellWizard server
- Creates automatic hydraulics reports
- Supports multiple hydraulics models, including power law, modified power law, and Bingham.

Tool Description

Used in conjunction with the Weatherford WellWizard server and Client, the Windows® eHydraulics software application calculates hydraulics information at the wellsite. The application pulls sensor data from the WellWizard Server, calculates the hydraulics information, and sends the results back to the server. The results are then integrated into the well database and are displayed in the WellWizard client.

Specifications

Current version	1.0.6
Required operating system	Windows 7
Required communications	Network connection to the WellWizard server required for online mode



The eHydraulics software application transmits hydraulics data gathered at the wellsite to the secure Weatherford WellWizard server.



*Windows is a registered trademark of Microsoft