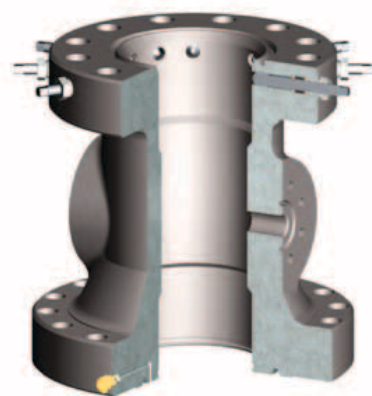




WFT-22 / WFT-22-BP / WFT-22-L

Casing Spool

Weatherford's WFT-22 casing spool provides positive casing suspension and annular sealing capabilities for intermediate and production casing strings. The casing spool is manufactured to API 6A specifications and uses a field-proven, straight-bowl design with a high-capacity, 45° load shoulder. This versatile design is superior to tapered designs because it can accommodate both slip- and mandrel-style casing hangers and provide consistent, precise hanger placement. Available with or without lockscrews, this casing spool is available in nominal flange sizes from 9 in. to 21-1/4 in. (228.6 mm to 539.75 mm) and pressure ratings to 10,000 psi (68.9 MPa). All popular bottom and outlet preparations are available to meet client requirements.



WFT-22-L casing spool with the full complement of lockscrews

Applications

- Onshore and offshore
- Light- to medium-casing-load conditions
- Normal- and critical-service wells

Features, Advantages and Benefits

- Because the WFT-22 casing spool is offered at all Weatherford wellhead locations worldwide, it is readily available.
- The casing spool accepts WFT-21, WFT-21P, and WFT-22 casing slip hangers plus mandrel-style casing and tubing hangers, providing versatility to meet client requirements.

Options

- Bottom preparations include the BG, integral FS-seal, P-seal, and metal-seal arrangements.
- The externally threaded (ET) style lockscrew provides isolation of the lockscrew threads from wellbore contaminants, preventing difficult operational and downtime situations.
- Outlet options available are threaded, studded, and extended flanges.
- This casing spool is available with no lockscrews (WFT-22), two lockscrews (WFT-22-BP), or the full complement of lockscrews (WFT-22-L).