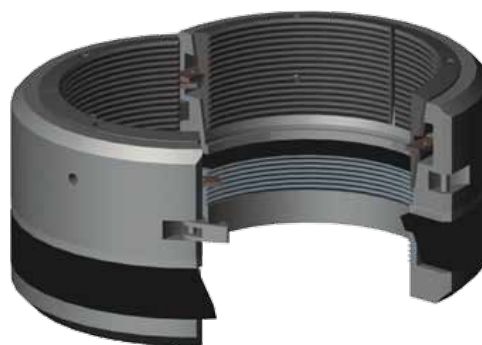




WFT-29 Casing Hanger

Weatherford's WFT-29 slip-type casing hanger provides reliable casing suspension and positive annular sealing in all service environments. The WFT-29 casing hanger maximum-load capacity of 100 percent of pipe body yield is ideal for heavy-casing-load applications. The field-proven, straight-bowl design lands on a 45° load shoulder providing support, limited only by the capacity of the casing string. The casing hanger is used globally in the WFT-29 wellhead-bowl profiles with or without lockscrews. This casing hanger is available in nominal sizes from 11 in. to 21-1/4 in. (279.4 mm to 539.75 mm).



WFT-29 casing hanger.

Applications

- Land and offshore
- Heavy-casing-load situations with maximum working pressures of 10,000 psi (68.9 MPa)
- Normal- and critical-service conditions

Features, Advantages and Benefits

- The WFT-29 casing hanger is readily available at all Weatherford wellhead locations worldwide.
- Upper and lower slip segments separate the casing load, allowing for greater weight-hanging capacity.
- This casing hanger reduces total well cost versus mandrel casing hangers.
- The WFT-29 casing hanger is designed for easy installation and has a track record for reliability.