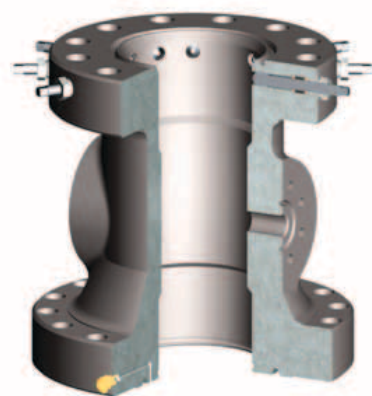




WFT-29 / WFT-29-BP / WFT-29-L

Casing Spool

Weatherford's WFT-29 casing spool provides positive casing suspension and annular sealing capabilities and a solid foundation for drilling a successful well. The casing spool is manufactured to API 6A specifications and uses a field-proven deep-straight-bowl design with a high-capacity, 45° load shoulder. This versatile design is superior to tapered designs because it can accommodate both slip- and mandrel-style casing hangers and provide consistent, precise hanger placement. Available with or without lockscrews, this casing spool is available in nominal flange sizes from 11 in. to 26-3/4 in. (279.4 mm to 679.5 mm) and pressure ratings to 15,000 psi (103.5 MPa). All popular bottom and outlet preparations are available to meet client requirements.



WFT-29-L casing spool with the full complement of lockscrews

Applications

- Onshore and offshore
- Heavy-pipe-load conditions
- Normal- and critical-service wells

Features, Advantages and Benefits

- Because the WFT-29 casing spool is offered at all Weatherford wellhead locations worldwide, it is readily available.
- The casing head accepts WFT-21, WFT-21P, WFT-22, and WFT-29 casing slip hangers plus many mandrel-style casing and tubing hangers, providing versatility to meet client requirements.

Options

- Bottom preparations include the BG, integral FS-seal, P-seal, and metal-seal arrangements.
- The externally threaded (ET) style lockscrew provides isolation of the lockscrew threads from wellbore contaminants, preventing difficult operational and downtime conditions.
- Outlet options available are threaded, studded, and extended flanges.
- This casing head is available with no lockscrews (WFT-29), two lockscrews (WFT-29-BP), or the full complement of lockscrews (WFT-29-L).