

Openhole I-Wheel®

Overcomes deployment difficulties in openhole applications

Applications

- Open hole

Features and Benefits

- Reduces contact with the bore wall via the lifting force placed at tangents
- Creates standoff which significantly reduces abnormal contact friction
- Reduces differential sticking and fishing operations by 90%
- Can provide requested offset and centralize tools in different bore and casing sizes

Tool Description

The Weatherford openhole I-Wheel is an innovative device used to convey any toolstring into highly deviated wellbores.

Openhole I-Wheels can be placed anywhere along the toolstring. They create low contact areas that keep the tool body off the low side of the bore wall, with a gap to pass over problem areas. The tools are efficient, consistent, and reliable in highly deviated wells and reduce modelled friction by up to 80%.

A wide range of designs are available for any casing or borehole size. Optional slipover over-body variants enable the best tool configuration for optimum deployment. Custom-engineered sizing and bespoke mounting variants are developed upon request to suit specific applications and well conditions.



Openhole I-Wheel®

Environmental Specifications

Maximum temperature	450°F (232°C)
Maximum pressure	25,000 psi (172 MPa)
Material hub/wheel	17-4 PH/H1150 Stainless Steel

Mechanical Specifications

I-Wheel	3-3/8 in. XLT	Integrated	Slimline	5-1/8 in.	5-1/8 in. Max Lift	7 in.	XT	ST
Outside diameter	3.375 in. (86 mm)	4.600 in. (117 mm)	4.750 in. (121 mm)	5.125 in. (130 mm)	5.125 in. (130 mm)	5.500 in. (140 mm)	N/A	6.400 in. (163 mm)
Make-up length	5.450 in. (138 mm)	4.700 in. (120 mm)	5.100 in. (130 mm)	1.600 in. (41 mm)	3.750 in. (95 mm)	1.700 in. (43 mm)	1.600 in. (41 mm)	5.000 in. (127 mm)
Slipover sleeve option	N/A	2.125 to 3.375 in. (53.9 to 85.7 mm)	N/A	2.125 to 3.625 in. (53.9 to 92.0 mm)	3.160 to 3.625 in. (80.2 to 92.0 mm)	2.125 to 3.625 in. (53.9 to 92.0 mm)	2.125 to 3.625 in. (53.9 to 92.0 mm)	3.375 to 4.750 in. (85.7 to 120.6 mm)



Integrated



5-1/8" Max Lift



5-1/8"



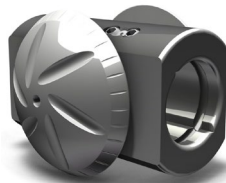
XT



ST



Slimline



3-3/8" XLT



7"

