

# AccuView<sup>®</sup> Job Optimization System

Delivers real-time, actionable rig data with live remote support

## Applications

- Re-entry and casing exit operations
- Openhole completion operations
- Multilateral operations
- Fishing operations
- Abandonment operations

## Features and Benefits

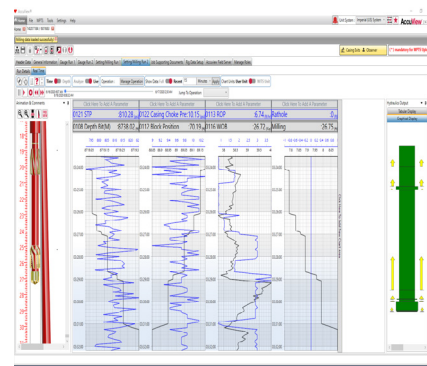
- Intuitive user interface displays all target parameters and is customizable to each job.
- Remote-location digital pipe marking capability eliminates manual marking of the pipe to minimize handling and enhance safety.
- Instant-replay capability enables remote users to review and analyze data from critical events based on depth or time, which reduces nonproductive time.
- Simultaneous access enables multiple users in different locations to log in and view the same job in real time.
- Enhanced communications capability enables rig personnel to share operational parameters and collaborate with Weatherford technicians in real time.
- Record keeping and reporting functions are integrated into the system.

## Tool Description

The Weatherford AccuView optimization system ensures that each operation is performed to optimal specifications. Using real-time rig data transmitted directly from the rig site or via a central WITSML server, each job can be monitored and supported remotely by a global pool of subject matter experts. An integrated hydraulics calculation software package speeds analysis and collaboration between personnel.

The AccuView system automatically records and stores rig data for quicker, more accurate analysis. The system links to the Weatherford Performance Tracking System (WPTS) and includes a historical database of operations, which helps expedite pre-job planning for each job. Should complications arise, a global team of technicians is available to help ensure optimal operational performance, reduce rig time, and lower operational costs.

Before the AccuView system is implemented in the field, all operators receive necessary system training from Weatherford technicians to speed the setup and deployment of this plug-and-play technology.



The AccuView job optimization system provides a customizable dashboard to enable displaying and sharing of key parameters in real time.

