



Elevator Ring

The Weatherford elevator ring is an adapter that fits around the RMS rotary-mounted slips and enables the slips to be used as an elevator. The string weight is transferred from the RMS tool to the bail ears, which are mounted to the rig derrick.

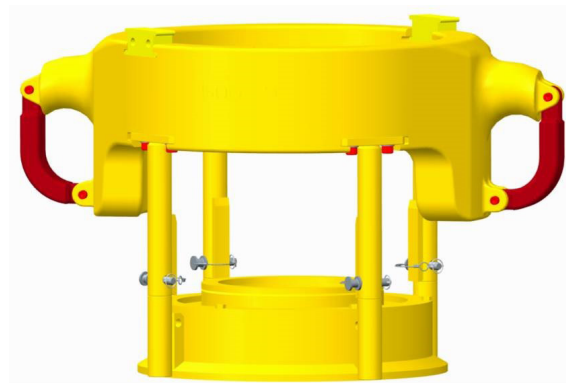
Applications

The elevator ring is available with two different load ratings:

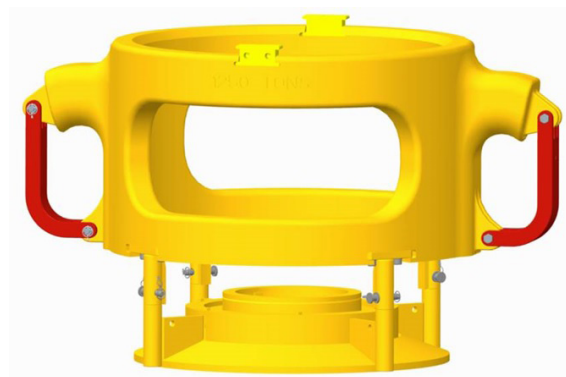
- 500-ton (453,592-kg) load rating, for use with the RMS 2000
- 1,250-ton (1,133,981-kg) load rating, for use with the RMS 2400

Features, Advantages, and Benefits

- The elevator ring makes it possible to use the same tool as both a spider and an elevator.
 - This ensures a consistent, reliable pipe-running system and compatibility with the integrated safety interlock system, which prevents accidental opening of the tools and dropping a string.
 - Tapered strings can be run without changing elevators for different rig operations, which saves time.
- The elevator ring is equipped with a bottom bell guide to centralize pipe before the slips are closed around the pipe.
- Compatibility with links of various sizes eliminates link changes and saves considerable time.



Elevator ring with 500-ton (453,592-kg) load rating



Elevator ring with 1,250-ton (1,133,981-kg) load rating



Elevator Ring

Specifications

Elevator ring load rating (tons, kg)	500 453,592	1,250 1,133,981
Used with	RMS 2000	RMS 2400
Bail sizes (tons, kg)	500, 750, and above <i>453,592; 680,389; and above</i>	750 and above <i>680,389 and above</i>
Maximum load (lb, kg)	2,250,000 <i>1,020,583</i>	5,000,000 <i>2,267,962</i>
Bottom bell guide range (in., mm)	5 to 20 <i>127 to 508</i>	6-5/8 to 24 <i>168 to 610</i>
Compatible link sizes (tons, kg)	500; 750; 1,000; 1,250 <i>453,592; 680,389; 907,185; 1,133,981</i>	750; 1,000; 1,250 <i>680,389; 907,185; 1,133,981</i>
Design verification	API 8C	