



## *Mech-Tec™ Clamp-On Thread Protectors*

The Weatherford Mech-Tec clamp-on thread protector provides dependable, easy-to-use protection for all API and equivalent threads on casing or tubing.

The thread protector attaches to the pin end of the tubular with a quick-fit-and-release mechanism for easy installation and removal. A special tension adjustment screw enables precise modification of the protector ID to ensure that the intended thread squeeze is achieved. Once the thread protector is clamped on the casing or tubing pin, the locking handle is concealed in the clamp body to prevent damage or unintended release. Returning the Mech-Tec thread protector from the rig floor to the pipe rack is easy. The hook-shaped locking handle is opened, hooked over a catch line, and slid downward, toward the pipe rack.

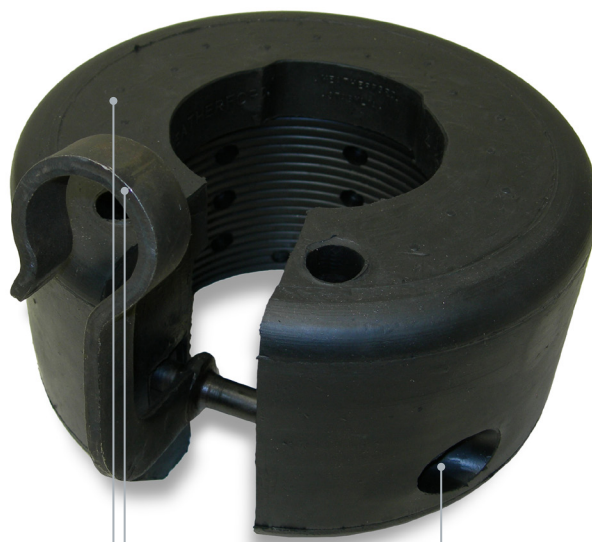
### *Specifications*

#### **Mech-Tec Thread Protector Sizes (in.)**

2-3/8	6-5/8	10-3/4
2-7/8	7*	11-3/4
4	7-5/8	13-3/8*
4-1/2	8-5/8	16
5	9-5/8*	18-5/8
5-1/2	—	20

\*Standard stocked sizes

Note: The Mech-Tec thread protector can be used on all API and equivalent threads. For premium threads (and API threads), use the Weatherford Klepo® inflatable thread protector.



A special **tension adjustment screw** ensures a tight fit for dependable protection.

The hook-shaped **locking handle** facilitates returning the thread protector to the pipe rack by catch line, which enhances rig-floor efficiency. The locking handle is concealed in the clamp body to prevent damage or unintended release. The quick-release mechanism enables easy installation and removal for fast, trouble-free use.

Tough, durable **nitrile rubber (NBR)** covers the thread protector for excellent shock, abrasion, and tear resistance that extend tool life.