

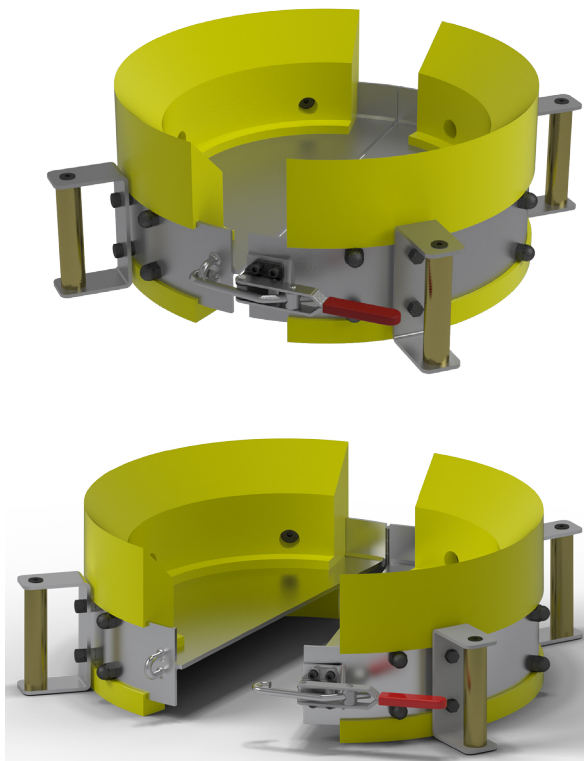


Pull Plate Guide

The Weatherford pull plate guide is used for the safe, controlled breakout and laydown of tubulars using the OverDrive™ casing-running system and TorkDrive™ tools. The pull plate guide helps to safely transfer pipe-joint weight from the TorkDrive gripping element to the single-joint elevator, which reduces stress and damage to the tubular threads, bail arms, and single-joint elevator. The pull plate guide also enhances pipe-handling safety for drilling-floor personnel by decreasing the risk of damage to the tubular connection threads, TorkDrive bail arms, or single-joint elevator, which could result in dropped objects from the derrick.

Applications

- Tubulars from 4-1/2 in. to 20 in.
- Casing with premium connections



Features, Advantages, and Benefits

- The pull plate guide improves control while spinning out and laying down tubulars, which minimizes damage to equipment and threads.
- The quality-engineered polyurethane shell and seawater-resistant stainless steel collar minimize maintenance and increase durability to extend the life of the tool.
- The design of the latching mechanism makes it easy to latch the pull plate guide onto pipe and to remove it from pipe.
- The versatile pull plate guide is compatible with a range of casing sizes and connections.