



**MEDIA RELEASE**

## **Weatherford Collaboration Software Enables Single-Trip Casing Exit in Challenging Sakhalin Well**

**HOUSTON, February 8, 2018** – Weatherford International plc today announced the successful execution of a shallow-angle casing exit in Sakhalin Island, Russia, using the AccuView® real-time remote support system. This marks the first deployment of the AccuView system in the Russian Federation.

Weatherford used the AccuView system to transmit secure, real-time information between personnel on the platform rig and a global team of subject-matter experts. The software system facilitated real-time analysis of foot-by-foot performance, which enabled the operator to complete the casing exit in a single trip.

In the months leading up to the operation, Weatherford tested and verified all communications, including wired, wireless and satellite transmission capabilities, between the rig and operational support centers. Establishing a secure channel of communication was crucial in enabling real-time collaboration during the casing exit.

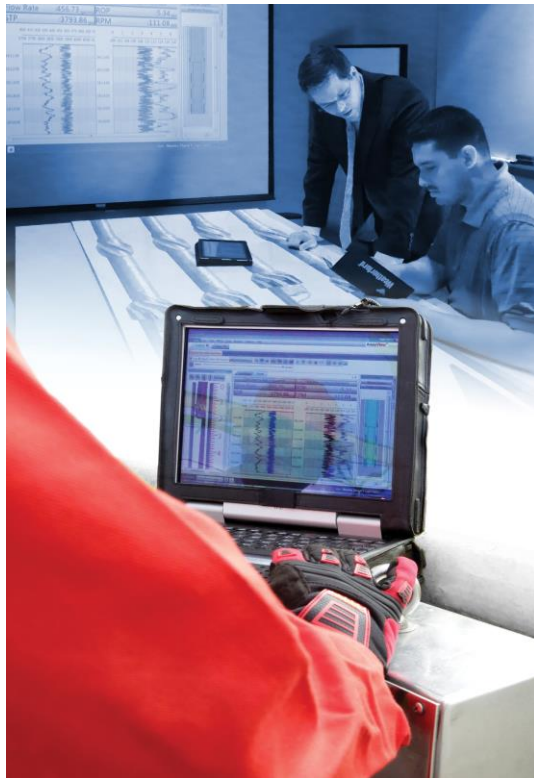
Globally, the AccuView system has been used to execute casing exits in more than 140 wells to date and has achieved a single-trip casing exit in all but one case. Weatherford anticipates further deployments of the AccuView system in Russia for various well-construction and completion operations, including casing exits, fishing and liner-hanger installations.

“We are extremely pleased with this success, which introduces the benefits of our AccuView system to the Russian market,” said Dean Bell, President of Well Construction at Weatherford. “This project exemplifies our commitment to delivering world-class technology and technical support to customers around the world, including those in remote locations.”

### **About Weatherford**

Weatherford is one of the largest multinational oilfield service companies providing innovative solutions, technology and services to the oil and gas industry. The Company operates in over 90 countries and has a network of approximately 800 locations, including manufacturing, service, research and development, and training facilities and employs approximately 29,200 people. For more information, visit [www.weatherford.com](http://www.weatherford.com) and connect with Weatherford on [LinkedIn](#), [Facebook](#), [Twitter](#) and [YouTube](#).

###



Cutline: The AccuView system supports real-time collaboration between the rig and offsite experts by securely transmitting key operational data.

**Weatherford Contact**

Kelley Hughes, Director of Corporate Communications, [Kelley.Hughes@Weatherford.com](mailto:Kelley.Hughes@Weatherford.com)

Jennifer Roth, Corporate Communications Manager, +1.713.836.4345,

[Jennifer.Roth@Weatherford.com](mailto:Jennifer.Roth@Weatherford.com)